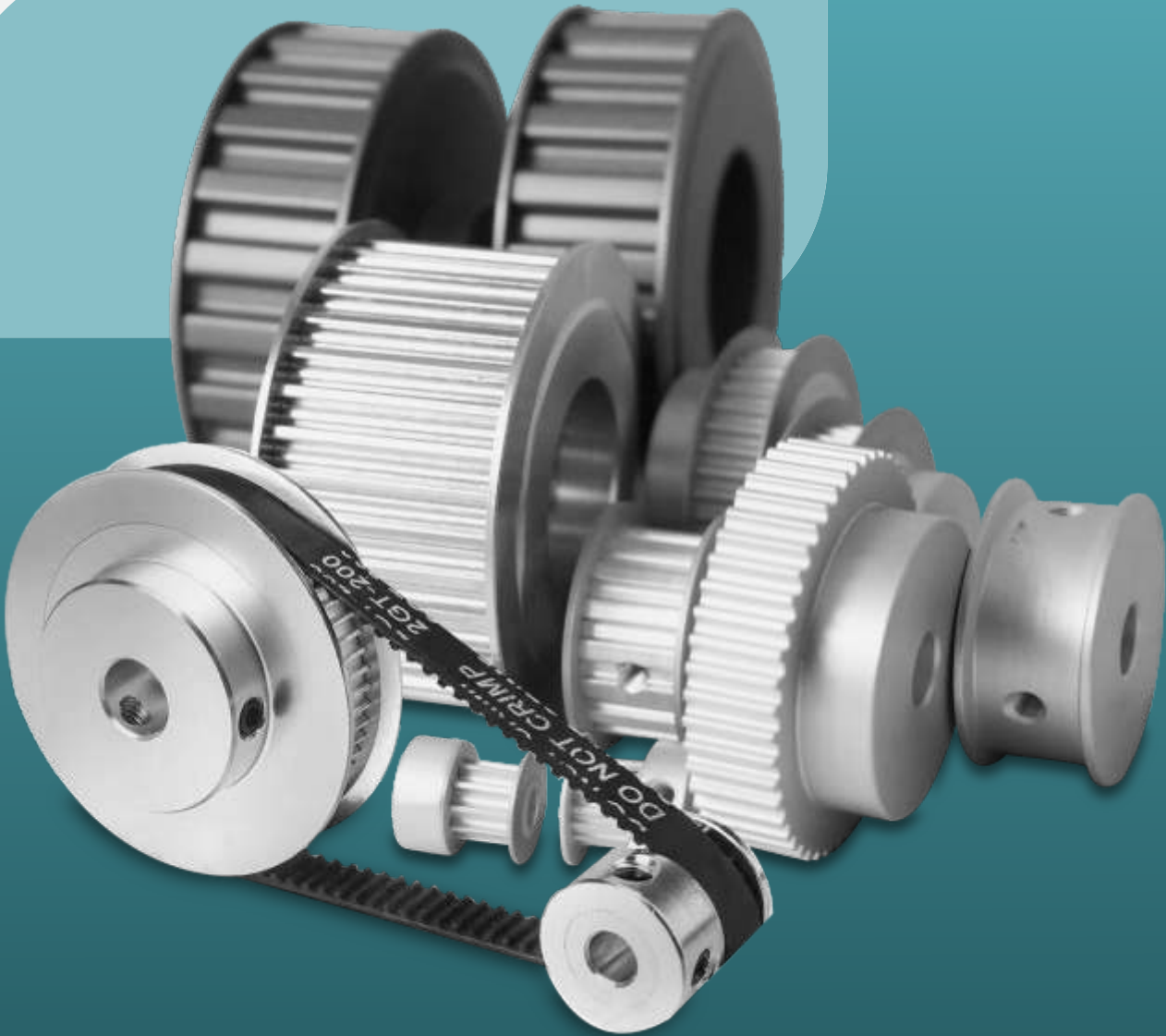




**AVM TIMING PULLEY PVT. LTD.**  
(formerly known as Ultrahigh (india) Engineers)



**AVM BRAND  
TIMING PULLEY**

**MANUFACTURER | SUPPLIER | EXPORTER**  
**OF PLAIN BORE TIMING PULLEY**

[www.avmtimingpulley.com](http://www.avmtimingpulley.com)

**IMPERIAL PITCH PLAIN BORE TIMING PULLEY**

MXL IMPERIAL PITCH PLAIN BORE TIMING PULLEY..... 1

XL (1/5") IMPERIAL PITCH PLAIN BORE TIMING PULLEY..... 2

L (3/8") IMPERIAL PITCH PLAIN BORE TIMING PULLEY..... 3-5

H (1/2") IMPERIAL PITCH PLAIN BORE TIMING PULLEY..... 6-9

XH (7/8") IMPERIAL PITCH PLAIN BORE TIMING PULLEY..... 10-12

**HIGH TORQUE DRIVE PITCH PLAIN BORE TIMING PULLEY**

2M HIGH TORQUE DRIVE PITCH PITCH PLAIN BORE TIMING PULLEY..... 13

3M HIGH TORQUE DRIVE PITCH PITCH PLAIN BORE TIMING PULLEY..... 14-16

5M HIGH TORQUE DRIVE PITCH PITCH PLAIN BORE TIMING PULLEY..... 17-19

8M HIGH TORQUE DRIVE PITCH PITCH PLAIN BORE TIMING PULLEY..... 20-23

14M HIGH TORQUE DRIVE PITCH PITCH PLAIN BORE TIMING PULLEY..... 24-28

**METRIC PITCH PLAIN BORE TIMING PULLEY**

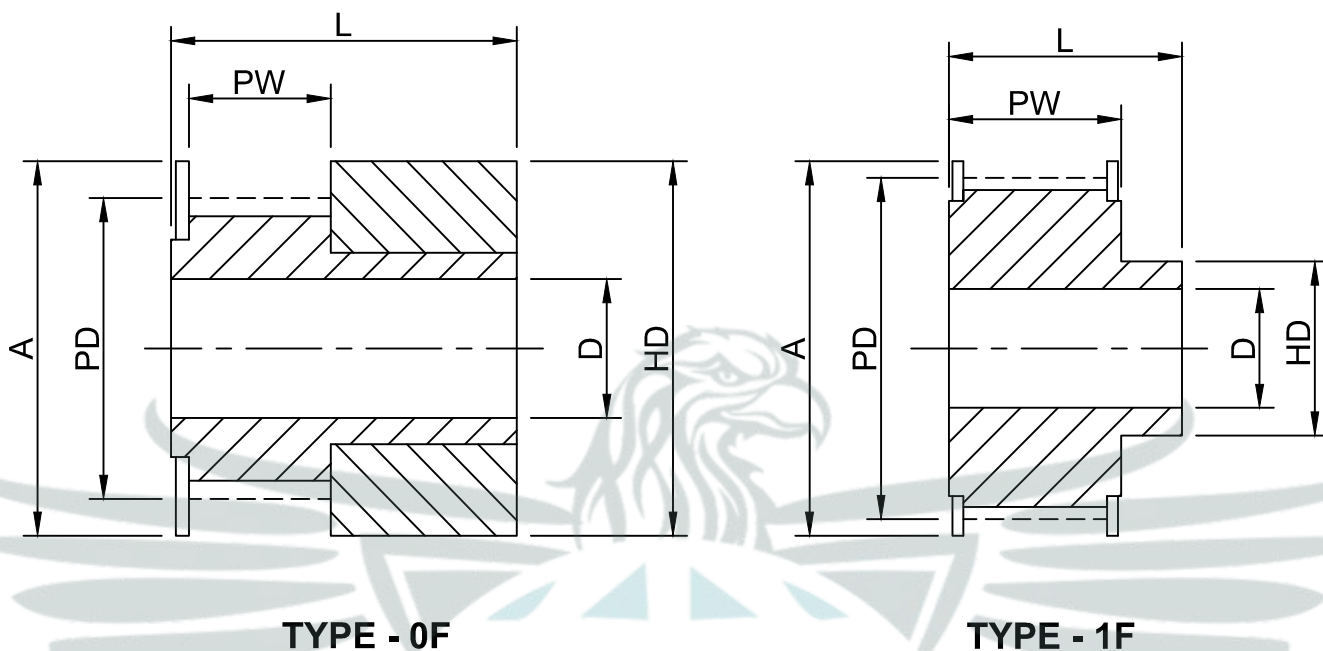
T2.5 METRIC PITCH PITCH PLAIN BORE TIMING PULLEY..... 29

T5 METRIC PITCH PITCH PLAIN BORE TIMING PULLEY..... 30-32

T10 METRIC PITCH PITCH PLAIN BORE TIMING PULLEY..... 33-36

AT5 METRIC PITCH PITCH PLAIN BORE TIMING PULLEY..... 37-39

AT 10 METRIC PITCH PITCH PLAIN BORE TIMING PULLEY..... 40-43

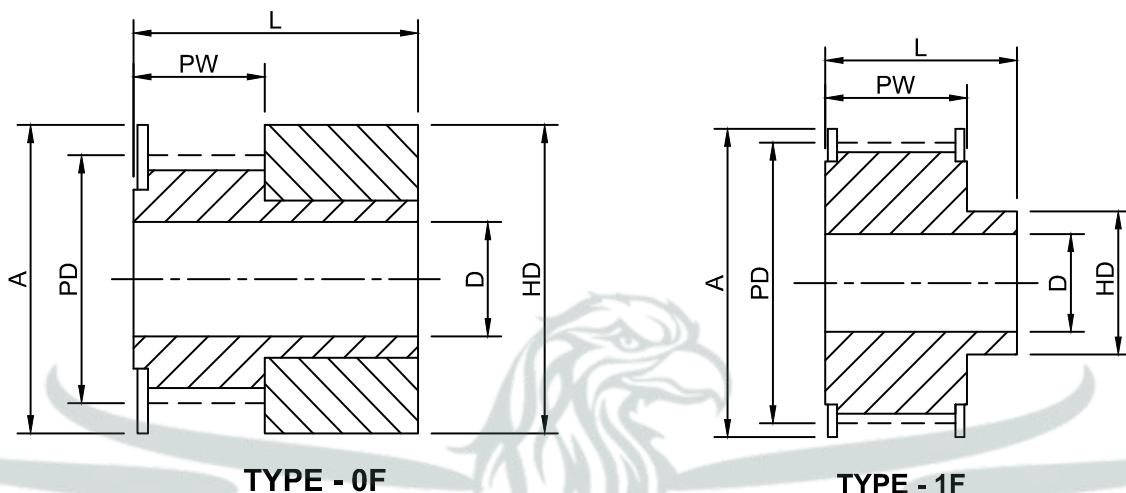


## TECHNICAL SPECIFICATIONS

### MXL (0.080") Pitch Pulley for 1/4" (6.35mm) Width Belts. Ref. MXL 025

PART NO.	PULLEY SIZE	PULLEY TYPE	MATERIAL	NO. OF TEETH	PD	A	HD	PW	L	MIN BORE (D)	MAX BORE	APPROX WEIGHT (kg)
N0001	16 MXL 025	0F	ALU	16	10.35	15	15	8.5	16	4	4	0.01
N0002	18 MXL 025	0F	ALU	18	11.64	16	16	8.5	16	4	6	0.01
N0003	20 MXL 025	0F	ALU	20	12.94	16	16	8.5	16	4	7	0.01
N0004	22 MXL 025	0F	ALU	22	14.23	17.5	17.5	8.5	16	4	8	0.01
N0005	24 MXL 025	0F	ALU	24	15.52	20	20	8.5	16	4	8	0.01
N0006	28 MXL 025	0F	ALU	28	18.11	25	25	8.5	16	4	10	0.01
N0007	30 MXL 025	1F	ALU	30	19.40	25	12	11	16	4	6.5	0.02
N0008	32 MXL 025	1F	ALU	32	20.70	25	14	11	16	5	8.5	0.02
N0009	36 MXL 025	1F	ALU	36	23.29	28	16	11	16	5	8.5	0.02
N0010	40 MXL 025	1F	ALU	40	25.87	32	18	11	16	5	11.5	0.03
N0011	42 MXL 025	1F	ALU	42	27.17	32	18	11	16	5	11.5	0.03
N0012	44 MXL 025	1F	ALU	44	28.46	37	18	11	16	5	12.7	0.03
N0013	48 MXL 025	1F	ALU	48	31.05	37	20	11	16	5	14	0.03
N0014	60 MXL 025	1F	ALU	60	38.81	44	24	11	16	5	18.5	0.04
N0015	72 MXL 025	1F	ALU	72	46.57	52	33	11	16	6	22.5	0.05

Please note all dimensions are in mm

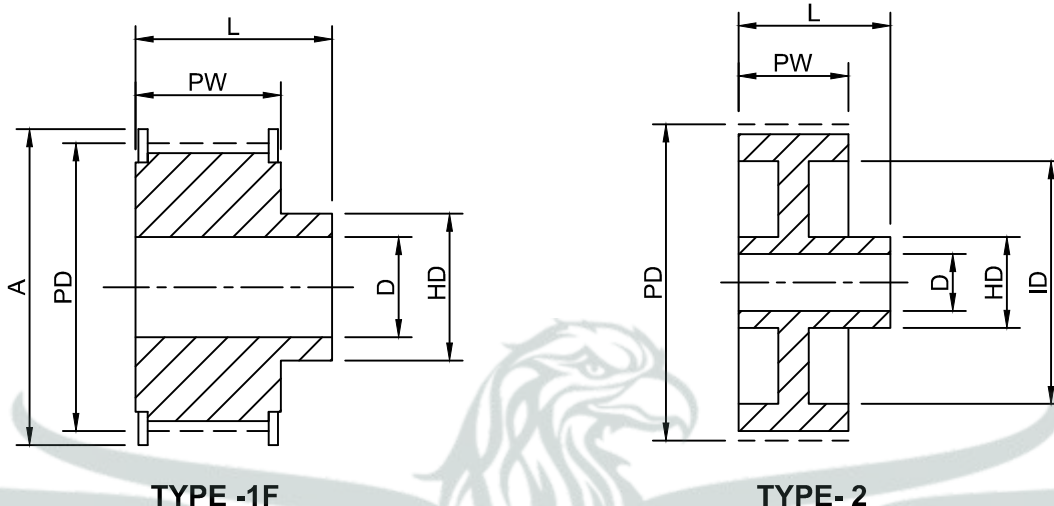

**TYPE - 0F**
**TYPE - 1F**

## TECHNICAL SPECIFICATIONS

**(1/5") Pitch Pulley for 3/8" (9.52mm) Width Belts. Ref. XL037**

PART NO.	PULLEY SIZE	PULLEY TYPE	MATERIAL	NO. OF TEETH	PD	A	HD	PW	L	MIN BORE (D)	MAX BORE (D)	APPROX WEIGHT (kg)
N0016	10 XL037	0F	ALU	10	16.17	22	22	14.3	20	4	6	0.02
N0017	11 XL037	0F	ALU	11	17.79	22	22	14.3	20	4	6	0.02
N0018	12 XL037	0F	ALU	12	19.40	25	25	14.3	20	4	7	0.03
N0019	13 XL037	0F	ALU	13	21.02	28	28	14.3	20	4	7	0.04
N0020	14 XL037	0F	ALU	14	22.64	28	28	14.3	20	4	10	0.05
N0021	15 XL037	1F	ALU	15	24.26	28	15	14.3	20	6	10	0.05
N0022	16 XL037	1F	ALU	16	25.87	32	18	14.3	20	6	10	0.06
N0023	17 XL037	1F	ALU	17	27.49	35	20	14.3	20	6	13	0.07
N0024	18 XL037	1F	ALU	18	29.11	35	20	14.3	20	6	13	0.08
N0025	19 XL037	1F	ALU	19	30.72	38	20	14.3	22	6	13	0.09
N0026	20 XL037	1F	ALU	20	32.34	38	23.5	14.3	22	6	15	0.11
N0027	21 XL037	1F	ALU	21	33.96	38	23.5	14.3	22	6	15	0.12
N0028	22 XL037	1F	ALU	22	35.57	41	25	14.3	22	6	16	0.13
N0029	24 XL037	1F	ALU	24	38.81	44	30	14.3	22	6	20	0.15
N0030	26 XL037	1F	ALU	26	42.04	48	32	14.3	22	8	20	0.07
N0031	27 XL037	1F	ALU	27	43.66	48	32	14.3	22	8	20	0.08
N0032	28 XL037	1F	ALU	28	45.28	51	34	14.3	22	8	22	0.09
N0033	30 XL037	1F	ALU	30	48.51	54	38	14.3	22	8	25	0.11
N0034	32 XL037	1F	ALU	32	51.74	57	40	14.3	25	8	25	0.12
N0035	34 XL037	1F	ALU	34	54.98	62	45	14.3	25	8	29	0.13
N0036	35 XL037	1F	ALU	35	56.60	62	45	14.3	25	8	29	0.14
N0037	36 XL037	1F	ALU	36	58.21	67	45	14.3	25	8	29	0.14
N0038	38 XL037	1F	ALU	38	61.45	67	45	14.3	25	8	29	0.16
N0039	40 XL037	1F	ALU	40	64.68	73	50	14.3	25	8	30	0.18
N0040	42 XL037	1F	ALU	42	67.91	77	50	14.3	25	8	30	0.19
N0041	44 XL037	1F	ALU	44	71.15	80	55	14.3	25	8	35	0.22
N0042	48 XL037	1F	ALU	48	77.62	84	60	14.3	25	10	40	0.26
N0043	60 XL037	1F	ALU	60	97.02	108	75	14.3	25	10	55	0.41
N0044	72 XL037	1F	ALU	72	116.42	124	85	14.3	25	10	65	0.56

Please note all dimensions are in mm

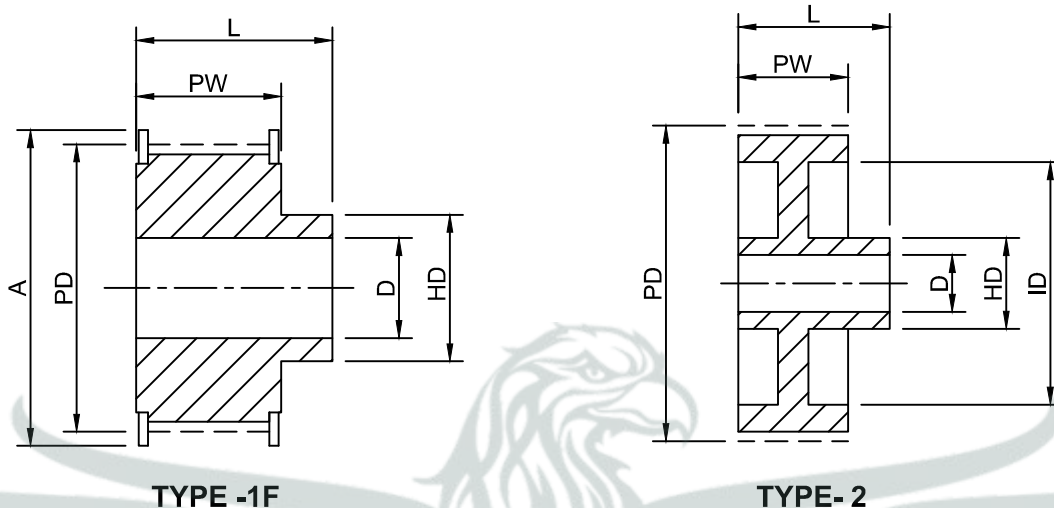


**TECHNICAL SPECIFICATIONS**

**(3/8") Pitch Pulley for 1/2" (12.70mm) Width Belts. Ref. L050**

PART NO.	PULLEY SIZE	PULLEY TYPE	MATERIAL	NO. OF TEETH	PD	A	HD	ID	PW	L	MIN BORE (D)	MAX BORE (D)	APPROX WEIGHT (kg)
N0045	10 L050	1F	STEEL	10	30.32	37	20	-	19	28	8	13	0.12
N0046	12 L050	1F	STEEL	12	36.38	43	24	-	19	30	8	15	0.17
N0047	13 L050	1F	STEEL	13	39.41	44	28	-	19	30	8	19	0.19
N0048	14 L050	1F	STEEL	14	42.45	48	28	-	19	30	8	19	0.22
N0049	15 L050	1F	STEEL	15	45.48	51	34	-	19	30	8	23	0.29
N0050	16 L050	1F	STEEL	16	48.51	54	36	-	19	32	8	24	0.35
N0051	17 L050	1F	STEEL	17	51.54	57	36	-	19	32	10	24	0.38
N0052	18 L050	1F	STEEL	18	54.57	60	40	-	19	32	10	27	0.42
N0053	19 L050	1F	STEEL	19	57.61	64	40	-	19	32	10	27	0.46
N0054	20 L050	1F	STEEL	20	60.64	67	40	-	19	32	10	27	0.50
N0055	21 L050	1F	STEEL	21	63.67	70	45	-	19	32	10	30	0.57
N0056	22 L050	1F	STEEL	22	66.70	75	45	-	19	32	10	30	0.61
N0057	23 L050	1F	STEEL	23	69.73	79	55	-	19	32	10	36	0.71
N0058	24 L050	1F	STEEL	24	72.77	79	58	-	19	32	10	36	0.81
N0059	25 L050	1F	STEEL	25	75.80	83	58	-	19	32	10	38	0.85
N0060	26 L050	1F	STEEL	26	78.83	87	58	-	19	32	11	38	0.91
N0061	27 L050	1F	STEEL	27	81.86	87	58	-	19	32	11	38	0.97
N0062	28 L050	1F	STEEL	28	84.89	91	70	-	19	32	11	38	1.03
N0063	30 L050	1F	STEEL	30	90.96	97	70	-	19	32	11	46	1.07
N0064	32 L050	1F	STEEL	32	97.03	102	70	-	19	32	11	46	1.23
N0065	36 L050	1F	STEEL	36	109.15	115	70	-	19	32	11	46	1.50
N0066	40 L050	1F	STEEL	40	121.29	128	70	-	19	32	11	46	1.77
N0067	44 L050	1F	STEEL	44	133.40	142	70	-	19	32	11	46	2.20
N0068	48 L050	1F	STEEL	48	145.53	150	70	-	19	32	11	46	2.68
N0069	60 L050	2	CAST IRON	60	181.91	-	75	160	19	42	14	45	3.10
N0070	72 L050	2	CAST IRON	72	218.30	-	75	197	19	42	14	45	4.86
N0071	84 L050	2	CAST IRON	84	254.68	-	75	233	19	42	14	45	5.00
N0072	96 L050	2	CAST IRON	96	291.06	-	75	269	19	42	14	45	6.00

Please note all dimensions are in mm

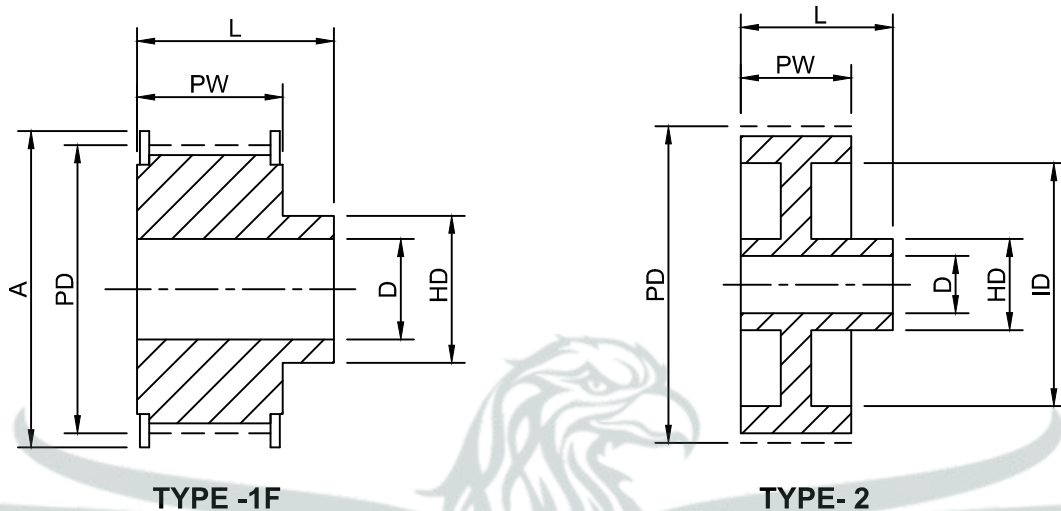


**TECHNICAL SPECIFICATIONS**

**(3/8") Pitch Pulley for 3/4" (19.05mm) Width Belts. Ref. L075**

PART NO.	PULLEY SIZE	PULLEY TYPE	MATERIAL	NO. OF TEETH	PD	A	HD	ID	PW	L	MIN BORE (D)	MAX BORE (D)	APPROX WEIGHT (kg)
N0073	10 L075	1F	STEEL	10	30.32	37	20	-	25	38	8	13	0.18
N0074	12 L075	1F	STEEL	12	36.38	43	24	-	25	38	8	15	0.22
N0075	13 L075	1F	STEEL	13	39.41	44	28	-	25	38	8	19	0.25
N0076	14 L075	1F	STEEL	14	42.45	48	28	-	25	38	11	19	0.27
N0077	15 L075	1F	STEEL	15	45.48	51	34	-	25	38	11	23	0.34
N0078	16 L075	1F	STEEL	16	48.51	54	36	-	25	38	11	24	0.43
N0079	17 L075	1F	STEEL	17	51.54	57	36	-	25	38	11	27	0.47
N0080	18 L075	1F	STEEL	18	54.57	60	40	-	25	38	11	27	0.51
N0081	19 L075	1F	STEEL	19	57.61	64	40	-	25	38	11	27	0.55
N0082	20 L075	1F	STEEL	20	60.64	67	40	-	25	38	11	30	0.59
N0083	21 L075	1F	STEEL	21	63.67	70	45	-	25	38	11	30	0.64
N0084	22 L075	1F	STEEL	22	66.70	75	45	-	25	38	11	30	0.69
N0085	23 L075	1F	STEEL	23	69.73	79	55	-	25	38	11	36	0.77
N0086	24 L075	1F	STEEL	24	72.77	79	55	-	25	38	11	36	0.85
N0087	25 L075	1F	STEEL	25	75.80	83	58	-	25	38	11	38	0.97
N0088	26 L075	1F	STEEL	26	78.83	87	58	-	25	38	11	38	1.02
N0089	27 L075	1F	STEEL	27	81.86	87	58	-	25	38	11	38	1.18
N0090	28 L075	1F	STEEL	28	84.89	91	58	-	25	38	11	38	1.19
N0091	30 L075	1F	STEEL	30	90.96	97	70	-	25	38	11	46	1.33
N0092	32 L075	1F	STEEL	32	97.03	102	70	-	25	38	11	46	1.54
N0093	36 L075	1F	STEEL	36	109.15	115	70	-	25	38	11	46	1.89
N0094	40 L075	1F	STEEL	40	121.29	128	70	-	25	38	11	46	2.35
N0095	44 L075	1F	STEEL	44	133.40	142	70	-	25	38	11	46	2.75
N0096	48 L075	1F	STEEL	48	145.53	150	70	-	25	38	11	46	3.19
N0097	60 L075	2	CAST IRON	60	181.91	-	75	160	25	45	14	45	3.44
N0098	72 L075	2	CAST IRON	72	218.29	-	75	197	25	45	14	45	4.58
N0099	84 L075	2	CAST IRON	84	254.68	-	75	233	25	45	14	45	5.60
N0100	96 L075	2	CAST IRON	96	291.06	-	75	269	25	45	14	45	7.00

Please note all dimensions are in mm

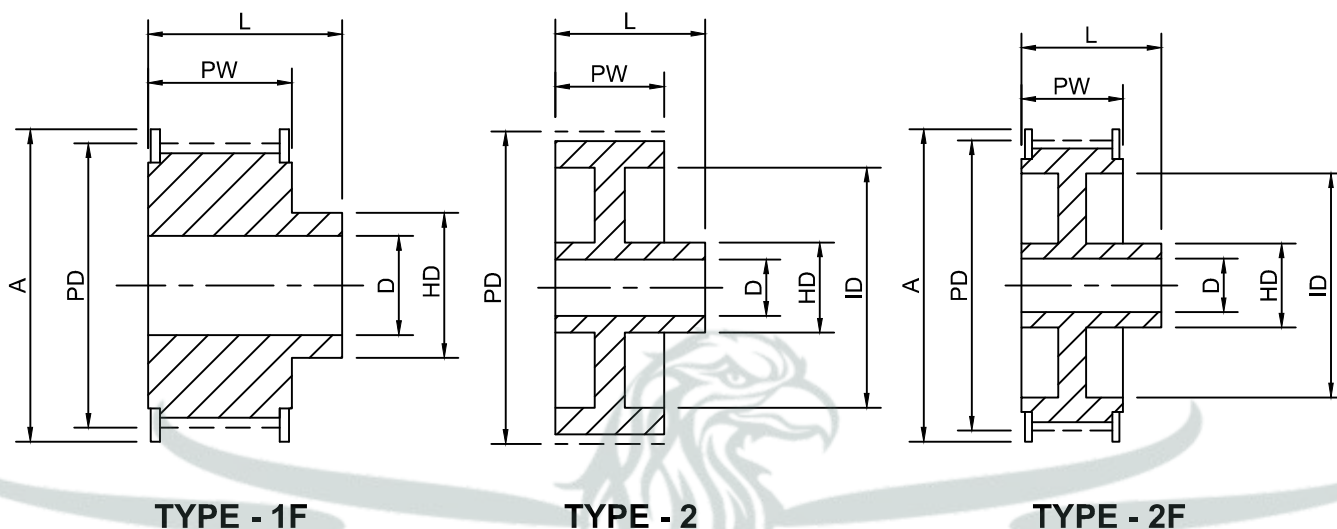


**TECHNICAL SPECIFICATIONS**

**(3/8") Pitch Pulley for 1" (25.40mm) Width Belts. Ref. L100**

PART NO.	PULLEY SIZE	PULLEY TYPE	MATERIAL	NO. OF TEETH	PD	A	HD	ID	PW	L	MIN BORE (D)	MAX BORE (D)	APPROX WEIGHT (kg)
N0101	10 L100	1F	STEEL	10	30.32	37	20	-	32	45	8	13	0.18
N0102	12 L100	1F	STEEL	12	36.38	43	24	-	32	45	8	15	0.26
N0103	13 L100	1F	STEEL	13	39.41	44	28	-	32	45	8	19	0.30
N0104	14 L100	1F	STEEL	14	42.45	48	28	-	32	45	11	19	0.34
N0105	15 L100	1F	STEEL	15	45.48	51	34	-	32	45	11	23	0.41
N0106	16 L100	1F	STEEL	16	48.51	54	36	-	32	45	11	24	0.48
N0107	17 L100	1F	STEEL	17	51.54	57	36	-	32	45	11	24	0.55
N0108	18 L100	1F	STEEL	18	54.57	60	40	-	32	45	11	27	0.62
N0109	19 L100	1F	STEEL	19	57.61	64	40	-	32	45	11	27	0.70
N0110	20 L100	1F	STEEL	20	60.64	67	40	-	32	45	11	27	0.72
N0111	21 L100	1F	STEEL	21	63.67	70	45	-	32	45	11	30	0.77
N0112	22 L100	1F	STEEL	22	66.70	75	45	-	32	45	11	30	0.88
N0113	23 L100	1F	STEEL	23	69.73	79	45	-	32	45	11	36	1.12
N0114	24 L100	1F	STEEL	24	72.77	79	55	-	32	45	11	36	1.16
N0115	25 L100	1F	STEEL	25	75.80	83	58	-	32	45	11	38	1.18
N0116	26 L100	1F	STEEL	26	78.83	87	58	-	32	45	11	38	1.24
N0117	27 L100	1F	STEEL	27	81.86	87	58	-	32	45	11	38	1.35
N0118	28 L100	1F	STEEL	28	84.89	91	58	-	32	45	11	38	1.42
N0119	30 L100	1F	STEEL	30	90.96	97	70	-	32	45	11	46	1.61
N0120	32 L100	1F	STEEL	32	97.03	102	70	-	32	45	11	46	1.84
N0121	36 L100	1F	STEEL	36	109.15	115	70	-	32	45	11	46	2.32
N0122	40 L100	1F	STEEL	40	121.29	128	70	-	32	45	11	46	2.86
N0123	44 L100	1F	STEEL	44	133.40	142	70	-	32	45	11	46	3.36
N0124	48 L100	1F	STEEL	48	145.53	150	70	-	32	45	11	46	3.86
N0125	60 L100	2	CAST IRON	60	181.91	-	75	160	32	50	14	45	3.55
N0126	72 L100	2	CAST IRON	72	218.30	-	75	197	32	50	14	45	5.00
N0127	84 L100	2	CAST IRON	84	254.68	-	75	233	32	50	14	45	6.30
N0128	96 L100	2	CAST IRON	96	291.06	-	75	269	32	50	14	45	8.20

Please note all dimensions are in mm



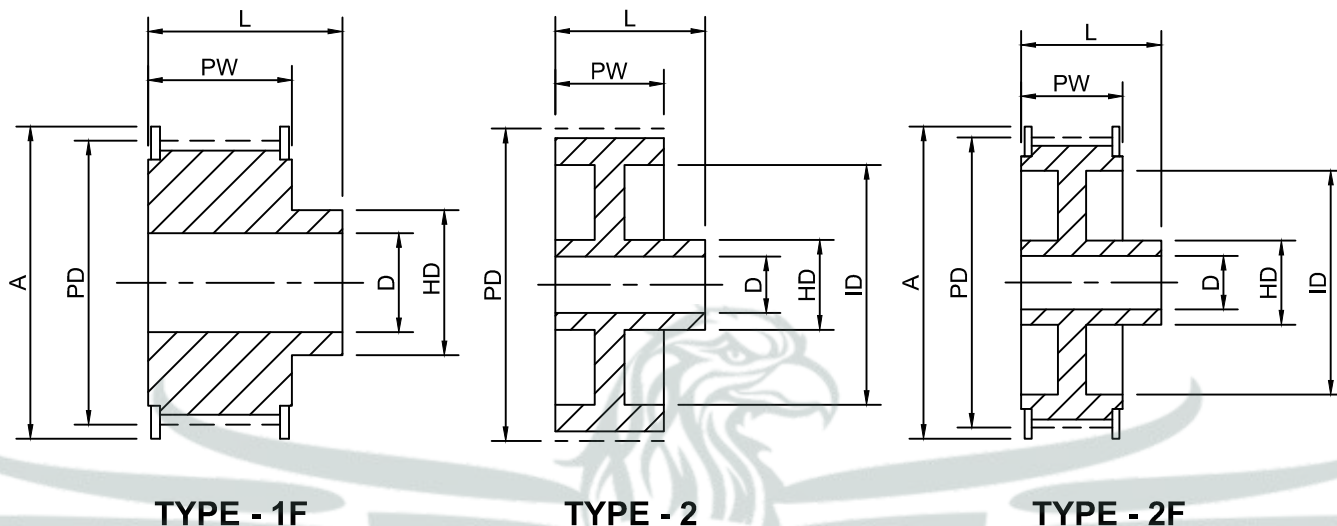
## TECHNICAL SPECIFICATIONS

### (1/2") Pitch Pulley for 1" (25.40mm) Width Belts. Ref. H100

PART NO.	PULLEY SIZE	PULLEY TYPE	MATERIAL	NO. OF TEETH	PD	A	HD	ID	PW	L	MIN BORE (D)	MAX BORE	APPROX WEIGHT (kg)
N0129	14 H100	1F	STEEL	14	56.60	64	45	-	32	45	11	30	0.67
N0130	16 H100	1F	STEEL	16	64.68	70	45	-	32	45	11	30	0.88
N0131	18 H100	1F	STEEL	18	72.77	79	55	-	32	45	12	36	1.06
N0132	19 H100	1F	STEEL	19	76.81	83	60	-	32	45	14	40	1.23
N0133	20 H100	1F	STEEL	20	80.85	87	62	-	32	45	14	41	1.33
N0134	21 H100	1F	STEEL	21	84.89	91	65	-	32	45	14	43	1.43
N0135	22 H100	1F	STEEL	22	88.94	93	68	-	32	45	14	45	1.63
N0136	24 H100	1F	STEEL	24	97.02	102	72	-	32	45	14	47	1.95
N0137	26 H100	1F	STEEL	26	105.11	112	80	-	32	45	14	54	2.30
N0138	28 H100	1F	STEEL	28	113.19	120	80	-	32	45	14	54	2.53
N0139	30 H100	1F	STEEL	30	121.29	128	80	-	32	45	14	54	2.93
N0140	32 H100	1F	STEEL	32	129.36	135	80	-	32	45	14	54	3.06
N0141	36 H100	1F	STEEL	36	145.53	150	80	-	32	45	14	48	3.92
N0142	40 H100	1F	STEEL	40	161.70	168	80	-	32	45	14	48	4.95
N0143	44 H100	2F	CAST IRON	44	177.87	184	80	150	32	50	14	48	6.20
N0144	48 H100	2F	CAST IRON	48	194.04	200	90	166	32	50	14	54	5.30
N0145	60 H100	2	CAST IRON	60	242.55	-	90	215	32	50	19	54	7.50
N0146	72 H100	2	CAST IRON	72	291.06	-	100	263	32	55	19	62	9.00
N0147	84 H100	2	CAST IRON	84	339.57	-	100	312	32	55	19	62	10.00
N0148	96 H100	2	CAST IRON	96	388.08	-	120	360	32	60	19	70	13.80
N0149	120 H100	2	CAST IRON	120	485.10	-	120	458	32	60	19	70	22.00

Please note all dimensions are in mm



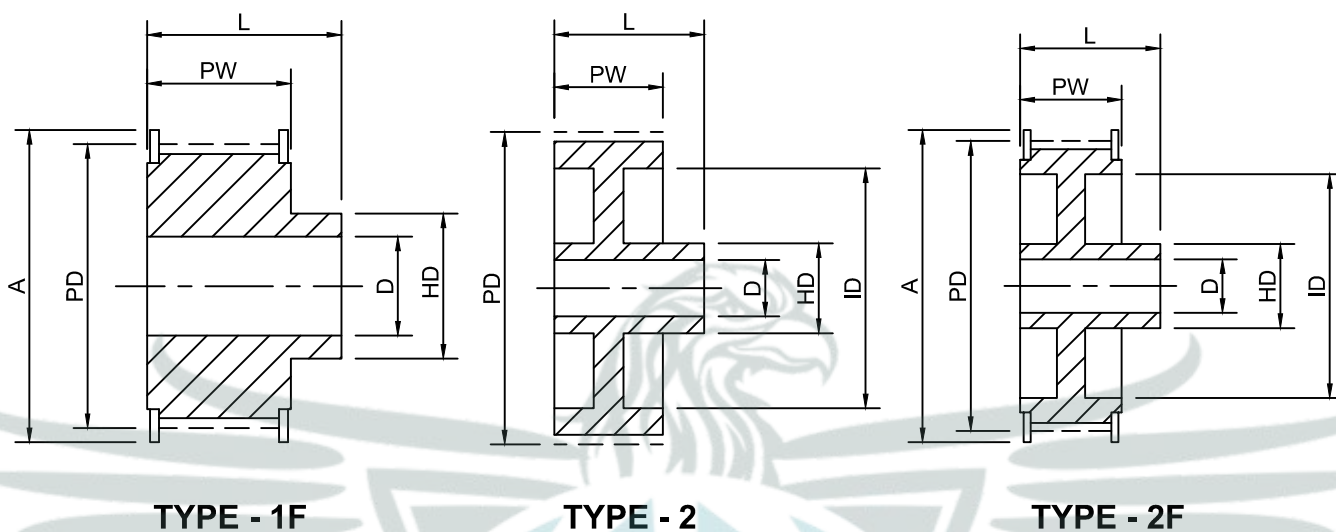


## TECHNICAL SPECIFICATIONS

### (1/2") Pitch Pulley for 1 1/2" (38.10mm) Width Belts. Ref. H150

PART NO.	PULLEY SIZE	PULLEY TYPE	MATERIAL	NO. OF TEETH	PD	A	HD	ID	PW	L	MIN BORE (D)	MAX BORE	APPROX WEIGHT (kg)
N0150	14 H150	1F	STEEL	14	56.60	64	45	-	46	58	11	28	0.95
N0151	16 H150	1F	STEEL	16	64.68	70	45	-	46	58	11	30	1.08
N0152	18 H150	1F	STEEL	18	72.77	79	55	-	46	58	14	36	1.45
N0153	19 H150	1F	STEEL	19	76.81	83	60	-	46	58	14	40	1.55
N0154	20 H150	1F	STEEL	20	80.85	87	62	-	46	58	14	41	1.70
N0155	21 H150	1F	STEEL	21	84.89	91	65	-	46	58	14	43	1.87
N0156	22 H150	1F	STEEL	22	88.94	93	68	-	46	58	14	45	2.07
N0157	24 H150	1F	STEEL	24	97.02	102	72	-	46	58	14	47	2.50
N0158	26 H150	1F	STEEL	26	105.11	112	80	-	46	58	14	54	2.99
N0159	28 H150	1F	STEEL	28	113.19	120	80	-	46	58	14	54	3.39
N0160	30 H150	1F	STEEL	30	121.29	128	80	-	46	58	14	54	3.86
N0161	32 H150	1F	STEEL	32	129.36	135	80	-	46	58	14	54	4.37
N0162	36 H150	1F	STEEL	36	145.53	150	80	-	46	58	14	48	5.50
N0163	40 H150	1F	STEEL	40	161.70	168	80	-	46	58	14	48	6.80
N0164	44 H150	2F	CAST IRON	44	177.87	184	80	150	46	58	19	48	8.50
N0165	48 H150	2F	CAST IRON	48	194.02	200	90	166	46	65	19	54	8.80
N0166	60 H150	2	CAST IRON	60	242.55	-	90	215	46	65	19	54	9.00
N0167	72 H150	2	CAST IRON	72	291.06	-	100	263	46	65	24	62	11.00
N0168	84 H150	2	CAST IRON	84	339.57	-	100	312	46	65	24	62	13.00
N0169	96 H150	2	CAST IRON	96	388.08	-	120	360	46	65	24	70	17.00
N0170	120 H150	2	CAST IRON	120	485.10	-	120	458	46	65	24	70	25

Please note all dimensions are in mm

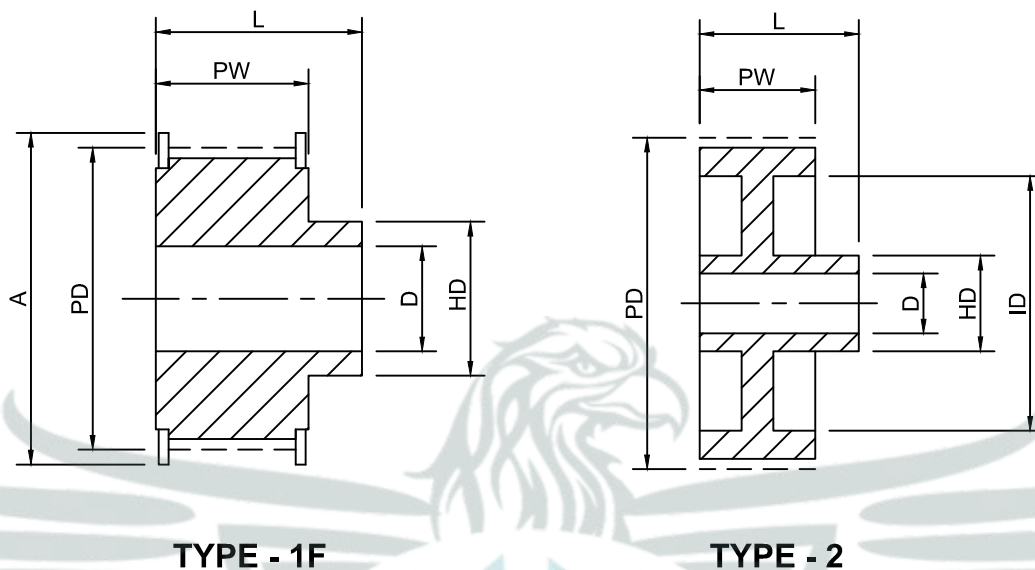


## TECHNICAL SPECIFICATIONS

### (1/2") Pitch Pulley for 2" (50.80 mm) Width Belts. Ref. H200

PART NO.	PULLEY SIZE	PULLEY TYPE	MATERIAL	NO. OF TEETH	PD	A	HD	ID	PW	L	MIN BORE (D)	MAX BORE	APPROX WEIGHT (kg)
N0171	14 H200	1F	STEEL	14	56.60	64	45	-	59	70	11	28	1.10
N0172	16 H200	1F	STEEL	16	64.68	70	45	-	59	70	11	30	1.34
N0173	18 H200	1F	STEEL	18	72.77	79	55	-	59	70	14	36	1.65
N0174	19 H200	1F	STEEL	19	76.81	83	60	-	59	70	14	40	1.90
N0175	20 H200	1F	STEEL	20	80.85	87	62	-	59	70	14	41	2.11
N0176	21 H200	1F	STEEL	21	84.89	91	65	-	59	70	14	43	2.23
N0177	22 H200	1F	STEEL	22	88.94	93	68	-	59	70	14	45	2.45
N0178	24 H200	1F	STEEL	24	97.02	102	72	-	59	70	14	47	2.97
N0179	26 H200	1F	STEEL	26	105.11	112	80	-	59	70	14	54	3.61
N0180	28 H200	1F	STEEL	28	113.19	120	80	-	59	70	14	54	4.10
N0181	30 H200	1F	STEEL	30	121.29	128	80	-	59	70	14	54	4.74
N0182	32 H200	1F	STEEL	32	129.36	135	80	-	59	70	14	54	5.60
N0183	36 H200	1F	STEEL	36	145.53	150	80	-	59	70	14	48	7.10
N0184	40 H200	1F	STEEL	40	161.70	168	80	-	59	70	14	48	8.40
N0185	44 H200	2F	CAST IRON	44	177.87	184	80	150	59	70	19	48	9.50
N0186	48 H200	2F	CAST IRON	48	194.04	200	90	166	59	75	24	54	10.50
N0187	60 H200	2	CAST IRON	60	242.55	-	90	215	59	75	24	54	11.00
N0188	72 H200	2	CAST IRON	72	291.06	-	100	263	59	75	28	62	14.00
N0189	84 H200	2	CAST IRON	84	339.57	-	120	312	59	75	28	62	15.00
N0190	96 H200	2	CAST IRON	96	388.08	-	120	360	59	75	28	70	20.30
N0191	120 H200	2	CAST IRON	120	485.10	-	120	458	59	75	28	70	28.00

Please note all dimensions are in mm

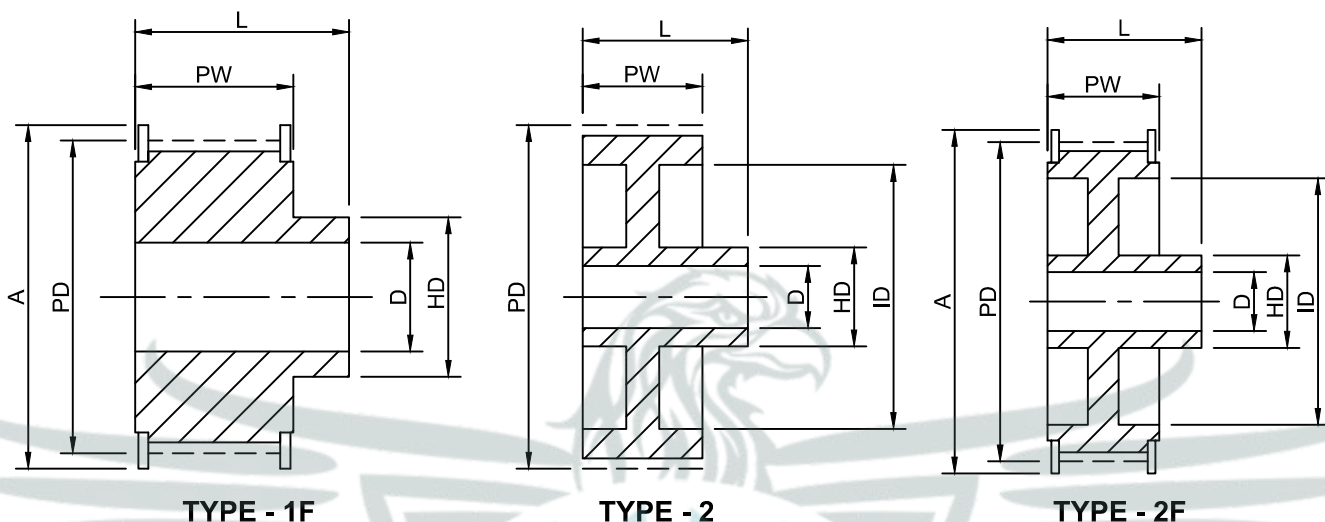


## TECHNICAL SPECIFICATIONS

### (1/2") Pitch Pulley for 3" (76.20 mm) Width Belts. Ref. H300

PART NO.	PULLEY SIZE	PULLEY TYPE	MATERIAL	NO. OF TEETH	PD	A	HD	ID	PW	L	MIN BORE (D)	MAX BORE	APPROX WEIGHT (kg)
N0192	14 H300	1F	STEEL	14	56.60	64	45	-	86	100	11	28	1.40
N0193	16 H300	1F	STEEL	16	64.68	70	45	-	86	100	11	30	1.80
N0194	18 H300	1F	STEEL	18	72.77	79	55	-	86	100	19	36	2.38
N0195	19 H300	1F	STEEL	19	76.81	83	60	-	86	100	19	40	2.60
N0196	20 H300	1F	STEEL	20	80.85	87	62	-	86	100	19	41	3.10
N0197	21 H300	1F	STEEL	21	84.89	91	65	-	86	100	19	43	3.32
N0198	22 H300	1F	STEEL	22	88.94	93	68	-	86	100	19	45	3.67
N0199	24 H300	1F	STEEL	24	97.02	102	72	-	86	100	19	47	4.40
N0200	26 H300	1F	STEEL	26	105.11	112	80	-	86	100	19	54	5.20
N0201	28 H300	1F	STEEL	28	113.19	120	80	-	86	100	19	54	5.60
N0202	30 H300	1F	STEEL	30	121.29	128	80	-	86	100	19	54	7.00
N0203	32 H300	1F	STEEL	32	129.36	135	80	-	86	100	19	54	7.80
N0204	36 H300	1F	STEEL	36	145.53	150	80	-	86	100	19	48	9.90
N0205	40 H300	1F	STEEL	40	161.70	168	80	-	86	100	19	48	12.20
N0206	44 H300	2	CAST IRON	44	177.87	-	80	150	86	100	24	48	15.00
N0207	48 H300	2	CAST IRON	48	194.04	-	90	166	86	100	24	54	11.40
N0208	60 H300	2	CAST IRON	60	242.55	-	90	215	86	100	24	54	13.30
N0209	72 H300	2	CAST IRON	72	291.06	-	100	263	86	100	28	62	19.00
N0210	84 H300	2	CAST IRON	84	339.57	-	100	312	86	100	28	62	20.00
N0211	96 H300	2	CAST IRON	96	388.08	-	120	360	86	100	28	70	27.00
N0212	120 H300	2	CAST IRON	120	485.10	-	120	458	86	100	28	70	33.00

Please note all dimensions are in mm

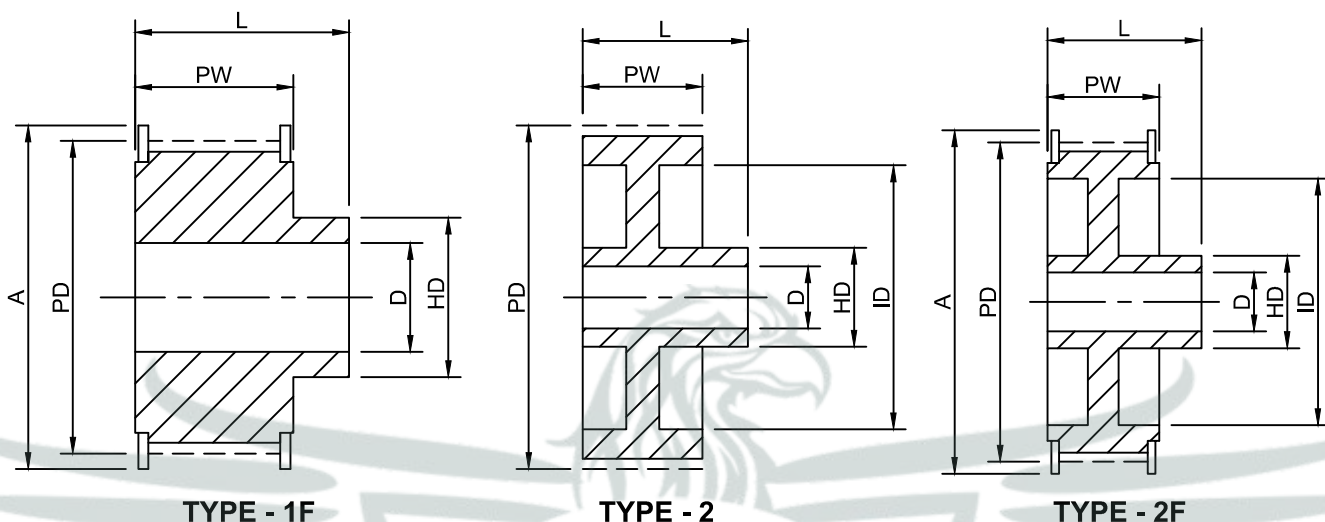


**TECHNICAL SPECIFICATIONS**

**(7/8") Pitch Pulley for 2" (50.80 mm) Width Belts. Ref. XH200**

PART NO.	PULLEY SIZE	PULLEY TYPE	MATERIAL	NO. OF TEETH	PD	A	HD	ID	PW	L	MIN BORE (D)	MAX BORE	APPROX WEIGHT (kg)
N0213	18 XH200	1F	STEEL	18	127.34	140	100	-	65	80	24	67	5.90
N0214	19 XH200	1F	STEEL	19	134.41	146	100	-	65	80	24	67	6.50
N0215	20 XH200	1F	STEEL	20	141.49	155	100	-	65	80	24	67	7.20
N0216	21 XH200	1F	STEEL	21	148.56	160	110	-	65	80	24	75	7.90
N0217	22 XH200	1F	STEEL	22	155.64	168	110	-	65	80	24	75	8.70
N0218	24 XH200	1F	STEEL	24	169.79	184	120	-	65	80	24	80	10.60
N0219	25 XH200	1F	STEEL	25	176.86	188	120	-	65	80	24	80	11.40
N0220	26 XH200	1F	STEEL	26	183.93	198	120	-	65	80	24	80	12.20
N0221	27 XH200	1F	STEEL	27	191.01	200	120	-	65	80	24	80	13.50
N0222	28 XH200	1F	STEEL	28	198.09	212	150	-	65	80	24	110	14.80
N0223	30 XH200	1F	STEEL	30	212.23	226	150	-	65	80	24	110	16.60
N0224	32 XH200	2F	STEEL	32	226.38	240	150	184	65	80	24	110	17.90
N0225	34 XH200	2F	STEEL	34	240.53	256	150	198	65	80	24	110	18.20
N0226	38 XH200	2F	CAST IRON	38	268.83	268	150	227	65	100	28	110	19.00
N0227	40 XH200	2F	CAST IRON	40	282.98	296	150	241	65	100	28	110	22.10
N0228	46 XH200	2	CAST IRON	46	325.42	-	150	283	65	100	28	110	26.00
N0229	48 XH200	2	CAST IRON	48	339.57	-	150	297	65	100	28	110	27.60
N0230	58 XH200	2	CAST IRON	58	410.32	-	150	368	65	100	28	110	27.60
N0231	60 XH200	2	CAST IRON	60	424.47	-	150	382	65	100	28	110	22.10
N0232	70 XH200	2	CAST IRON	70	495.21	-	190	453	65	100	28	170	39.00
N0233	72 XH200	2	CAST IRON	72	509.36	-	190	467	65	100	28	170	42.00
N0234	78 XH200	2	CAST IRON	78	551.81	-	190	510	65	100	28	170	48.00
N0235	80 XH200	2	CAST IRON	80	565.95	-	190	524	65	100	28	170	51.00
N0236	82 XH200	2	CAST IRON	82	580.10	-	190	538	65	100	28	170	54.00
N0237	84 XH200	2	CAST IRON	84	594.25	-	190	552	65	100	28	170	57.00
N0238	94 XH200	2	CAST IRON	94	665.00	-	190	623	65	100	28	170	64.00
N0239	96 XH200	2	CAST IRON	96	679.15	-	190	637	65	100	28	170	67.00
N0240	118 XH200	2	CAST IRON	118	834.78	-	190	792	65	100	28	170	88.00
N0241	120 XH200	2	CAST IRON	120	848.93	-	190	806	65	100	28	170	90.00

Please note all dimensions are in mm

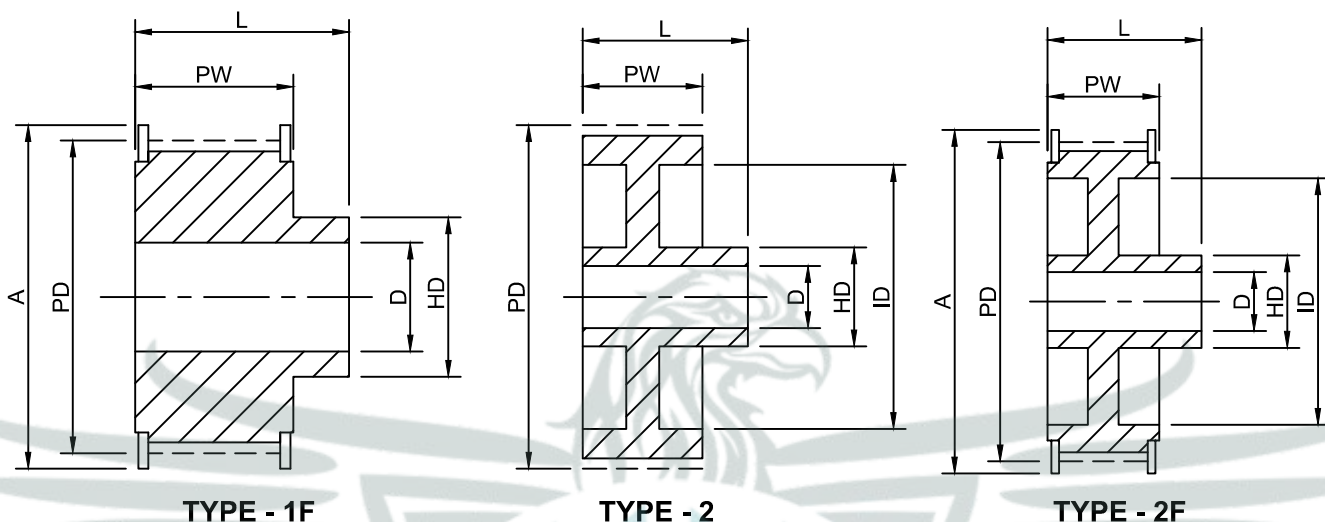


## TECHNICAL SPECIFICATIONS

### (7/8") Pitch Pulley for 3" (76.20 mm) Width Belts. Ref. XH300

PART NO.	PULLEY SIZE	PULLEY TYPE	MATERIAL	NO. OF TEETH	PD	A	HD	ID	PW	L	MIN BORE (D)	MAX BORE	APPROX WEIGHT (kg)
N0242	18 XH300	1F	STEEL	18	127.34	140	100	-	90.5	110	28	67	8.90
N0243	19 XH300	1F	STEEL	19	134.41	146	100	-	90.5	110	28	67	9.20
N0244	20 XH300	1F	STEEL	20	141.49	155	100	-	90.5	110	28	67	9.50
N0245	21 XH300	1F	STEEL	21	148.56	160	110	-	90.5	110	28	75	10.80
N0246	22 XH300	1F	STEEL	22	155.64	168	110	-	90.5	110	28	75	12.10
N0247	24 XH300	1F	STEEL	24	169.79	184	120	-	90.5	110	28	80	14.10
N0248	25 XH300	1F	STEEL	25	176.86	188	120	-	90.5	110	28	80	15.40
N0249	26 XH300	1F	STEEL	26	183.93	198	120	-	90.5	110	28	80	16.70
N0250	27 XH300	1F	STEEL	27	191.01	200	120	-	90.5	110	28	80	18.40
N0251	28 XH300	1F	STEEL	28	198.09	212	150	-	90.5	110	28	110	20.20
N0252	30 XH300	1F	STEEL	30	212.23	226	150	-	90.5	110	28	110	23.80
N0253	32 XH300	1F	STEEL	32	226.38	240	150	184	90.5	110	28	110	26.60
N0254	34 XH300	2F	STEEL	34	240.53	256	150	198	90.5	110	28	110	29.40
N0255	38 XH300	2F	CAST IRON	38	268.83	286	175	227	90.5	120	32	110	32.00
N0256	40 XH300	2F	CAST IRON	40	282.98	296	175	241	90.5	120	32	135	37.50
N0257	46 XH300	2	CAST IRON	46	325.42	-	175	283	90.5	120	32	135	32.50
N0258	48 XH300	2	CAST IRON	48	339.57	-	175	297	90.5	120	32	135	34.00
N0259	58 XH300	2	CAST IRON	58	410.32	-	175	368	90.5	120	32	135	37.00
N0260	60 XH300	2	CAST IRON	60	424.47	-	175	382	90.5	120	32	135	39.00
N0261	70 XH300	2	CAST IRON	70	495.21	-	175	453	90.5	120	32	135	53.00
N0262	72 XH300	2	CAST IRON	72	509.36	-	175	467	90.5	120	32	135	55.00
N0263	78 XH300	2	CAST IRON	78	551.81	-	175	510	90.5	120	32	135	62.00
N0264	80 XH300	2	CAST IRON	80	565.95	-	175	524	90.5	120	32	135	64.00
N0265	82 XH300	2	CAST IRON	82	580.10	-	175	538	90.5	120	32	135	66.00
N0266	84 XH300	2	CAST IRON	84	594.25	-	175	552	90.5	120	32	135	69.00
N0267	94 XH300	2	CAST IRON	94	665.00	-	175	623	90.5	120	32	135	81.00
N0268	96 XH300	2	CAST IRON	96	679.15	-	175	637	90.5	120	32	135	85.00
N0269	118 XH300	2	CAST IRON	118	834.78	-	175	792	90.5	120	32	135	116.00
N0270	120 XH300	2	CAST IRON	120	848.93	-	175	806	90.5	120	32	135	121.00

Please note all dimensions are in mm

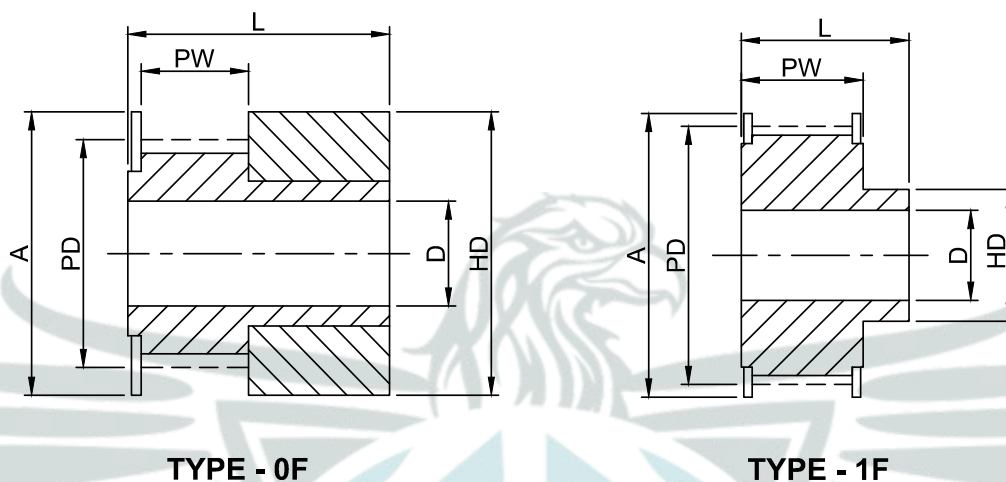


**TECHNICAL SPECIFICATIONS**

**(7/8") Pitch Pulley for 4" (101.60 mm) Width Belts. Ref. XH400**

PART NO.	PULLEY SIZE	PULLEY TYPE	MATERIAL	NO. OF TEETH	PD	A	HD	ID	PW	L	MIN BORE (D)	MAX BORE	APPROX WEIGHT (kg)
N0271	18 XH400	1F	STEEL	18	127.34	140	100	-	118	132	32	67	9.50
N0272	19 XH400	1F	STEEL	19	134.41	146	100	-	118	132	32	67	10.65
N0273	20 XH400	1F	STEEL	20	141.49	155	100	-	118	132	32	67	11.80
N0274	21 XH400	1F	STEEL	21	148.56	160	110	-	118	132	32	75	13.20
N0275	22 XH400	1F	STEEL	22	155.64	168	110	-	118	132	32	75	14.73
N0276	24 XH400	1F	STEEL	24	169.79	184	120	-	118	132	32	80	17.80
N0277	25 XH400	1F	STEEL	25	176.86	188	120	-	118	132	32	80	19.40
N0278	26 XH400	1F	STEEL	26	183.93	198	120	-	118	132	32	80	21.10
N0279	27 XH400	1F	STEEL	27	191.01	200	120	-	118	132	32	80	22.80
N0280	28 XH400	1F	STEEL	28	198.09	212	150	-	118	132	32	110	22.60
N0281	30 XH400	1F	STEEL	30	212.23	226	150	-	118	132	32	110	28.70
N0282	32 XH400	2F	STEEL	32	226.38	240	150	184	118	132	32	110	32.50
N0283	34 XH400	2F	STEEL	34	240.53	256	150	198	118	132	32	110	36.50
N0284	38 XH400	2F	CAST IRON	38	268.83	286	150	227	118	132	32	110	40.00
N0285	40 XH400	2	CAST IRON	40	282.98	296	150	241	118	132	32	135	32.90
N0286	46 XH400	2	CAST IRON	46	325.42	-	175	283	118	132	32	135	38.00
N0287	48 XH400	2	CAST IRON	48	339.57	-	175	297	118	132	32	135	41.00
N0288	58 XH400	2	CAST IRON	58	410.32	-	175	368	118	132	32	135	46.00
N0289	60 XH400	2	CAST IRON	60	424.47	-	175	382	118	132	32	135	47.00
N0290	70 XH400	2	CAST IRON	70	495.21	-	175	453	118	132	32	135	66.00
N0291	72 XH400	2	CAST IRON	72	509.36	-	175	467	118	132	32	135	68.00
N0292	78 XH400	2	CAST IRON	78	551.81	-	175	510	118	132	32	135	71.00
N0293	80 XH400	2	CAST IRON	80	565.95	-	175	524	118	132	32	135	73.00
N0294	82 XH400	2	CAST IRON	82	580.10	-	175	538	118	132	32	135	74.50
N0295	84 XH400	2	CAST IRON	84	594.25	-	175	552	118	132	32	135	78.00
N0296	94 XH400	2	CAST IRON	94	665.00	-	175	623	118	132	32	135	86.00
N0297	96 XH400	2	CAST IRON	96	679.15	-	175	637	118	132	32	135	98.00
N0298	118 XH400	2	CAST IRON	118	834.78	-	175	792	118	132	32	135	142.00
N0299	120 XH400	2	CAST IRON	120	848.93	-	175	806	118	132	32	135	156.00

Please note all dimensions are in mm

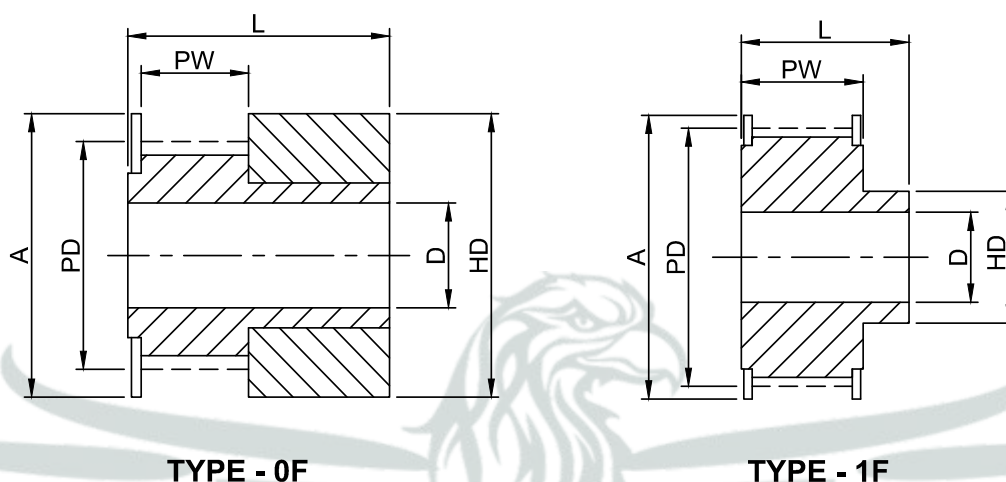


## TECHNICAL SPECIFICATIONS

### 2mm Pitch Pulleys For 6 mm Wide Belts Ref. 2M 06

PART NO.	PULLEY SIZE	PULLEY TYPE	MATERIAL	NO. OF TEETH	PD	A	HD	PW	L	MIM BORE (D)	MAX BORE	APPROX WEIGHT (kg)
N1187	16-2M-06	0F	ALUMINIUM	16	10.19	15.00	15.00	8.50	16.00	4.00	4.00	0.01
N1188	18-2M-06	0F	ALUMINIUM	18	11.46	16.00	16.00	8.50	16.00	4.00	6.00	0.01
N1189	20-2M-06	0F	ALUMINIUM	20	12.73	16.00	16.00	8.50	16.00	4.00	7.00	0.01
N1190	22-2M-06	0F	ALUMINIUM	22	14.01	17.50	17.50	8.50	16.00	4.00	8.00	0.01
N1191	24-2M-06	1F	ALUMINIUM	24	15.28	20.00	10.00	11.00	16.00	4.00	6.50	0.01
N1192	28-2M-06	1F	ALUMINIUM	28	17.83	25.00	11.00	11.00	16.00	4.00	7.00	0.01
N1193	30-2M-06	1F	ALUMINIUM	30	19.10	25.00	12.00	11.00	16.00	4.00	8.00	0.02
N1194	32-2M-06	1F	ALUMINIUM	32	20.37	25.00	14.00	11.00	16.00	5.00	8.50	0.02
N1195	36-2M-06	1F	ALUMINIUM	36	22.92	28.00	16.00	11.00	16.00	5.00	8.50	0.02
N1196	40-2M-06	1F	ALUMINIUM	40	25.46	32.00	18.00	11.00	16.00	5.00	11.00	0.03
N1197	42-2M-06	1F	ALUMINIUM	42	26.74	32.00	18.00	11.00	16.00	5.00	11.50	0.03
N1198	44-2M-06	1F	ALUMINIUM	44	28.01	37.00	18.00	11.00	16.00	5.00	12.70	0.03
N1199	48-2M-06	1F	ALUMINIUM	48	30.56	37.00	20.00	11.00	16.00	5.00	14.00	0.03
N1200	60-2M-06	1F	ALUMINIUM	60	38.20	44.00	24.00	11.00	16.00	5.00	18.50	0.04
N1201	72-2M-06	1F	ALUMINIUM	72	45.84	52.00	33.00	11.00	16.00	6.00	22.50	0.05

Please note all dimensions are in mm



**TYPE - 0F**

**TYPE - 1F**

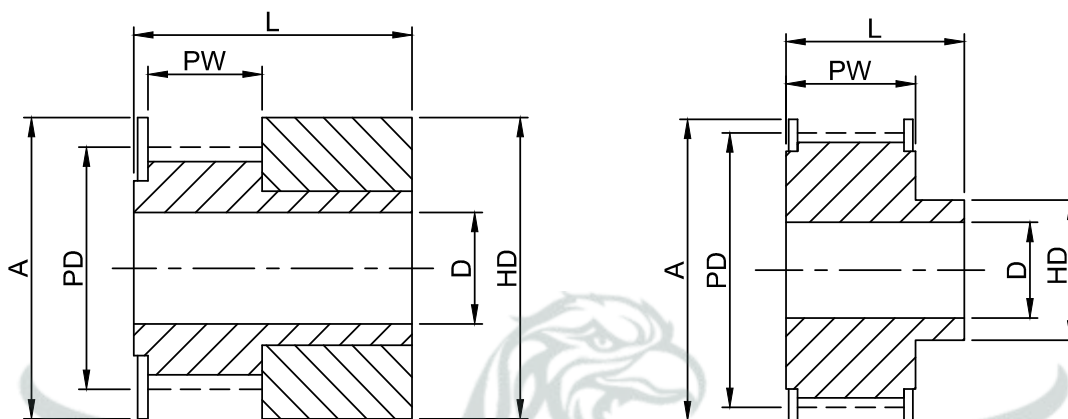
## TECHNICAL SPECIFICATIONS

### 3mm Pitch Pulleys For 6mm Wide Belts Ref. 3M 06

PART NO.	PULLEY SIZE	PULLEY TYPE	MATERIAL	NO. OF TEETH	PD	A	HD	PW	L	MIM BORE (D)	MAX BORE	APPROX WEIGHT (kg)
N0300	10-3m-06	0F	ALUMINIUM	10	9.55	13.00	13.00	7.20	14.50	4.00	4.00	0.004
N0301	12-3M-06	0F	ALUMINIUM	12	11.46	15.00	15.00	7.20	14.50	4.00	6.00	0.006
N0302	14-3M-06	0F	ALUMINIUM	14	13.37	16.00	16.00	7.20	14.050	4.00	7.00	0.008
N0303	15-3M-06	0F	ALUMINIUM	15	14.32	17.50	17.50	7.20	14.50	4.00	8.00	0.010
N0304	16-3M-06	1F	ALUMINIUM	16	15.28	18.00	10.00	9.80	17.50	4.00	6.50	0.008
N0305	18-3M-06	1F	ALUMINIUM	18	17.19	20.00	11.00	9.80	17.50	6.00	7.00	0.009
N0306	20-3M-06	1F	ALUMINIUM	20	19.10	23.00	12.00	9.80	17.50	6.00	8.00	0.012
N0307	21-3M-06	1F	ALUMINIUM	21	20.05	25.00	13.00	9.80	17.50	6.00	8.50	0.014
N0308	22-3M-06	1F	ALUMINIUM	22	21.01	25.00	13.00	9.80	17.50	6.00	8.50	0.015
N0309	24-3M-06	1F	ALUMINIUM	24	22.92	25.00	13.00	9.80	17.50	6.00	8.50	0.017
N3010	26-3M-06	1F	ALUMINIUM	26	24.83	28.00	16.00	9.80	17.50	6.00	10.50	0.022
N0311	28-3M-06	1F	ALUMINIUM	28	26.74	32.00	18.00	9.80	17.50	6.00	11.50	0.027
N0312	30-3M-06	1F	ALUMINIUM	30	28.65	32.00	20.00	9.80	17.50	6.00	12.70	0.030
N0313	32-3M-06	1F	ALUMINIUM	32	30.56	36.00	22.00	9.80	17.50	6.00	14.00	0.040
N0314	36-3M-06	1F	ALUMINIUM	36	34.38	38.00	26.00	10.30	18.00	6.00	17.00	0.060
N0315	40-3M-06	1F	ALUMINIUM	40	38.20	42.00	28.00	10.30	18.00	6.00	18.50	0.070
N0316	44-3M-06	1F	ALUMINIUM	44	42.02	48.00	33.00	10.30	18.00	6.00	22.50	0.080
N0317	48-3M-06	1F	ALUMINIUM	48	45.84	52.00	33.00	10.30	18.00	8.00	22.50	0.080
N0318	60-3M-06	1F	ALUMINIUM	60	57.30	61.00	44.00	10.30	18.60	8.00	24.00	0.150
N0319	72-3M-06	1F	ALUMINIUM	72	68.75	74.00	50.00	10.30	18.60	8.00	40.00	0.210

Please note all dimensions are in mm





**TYPE - 0F**

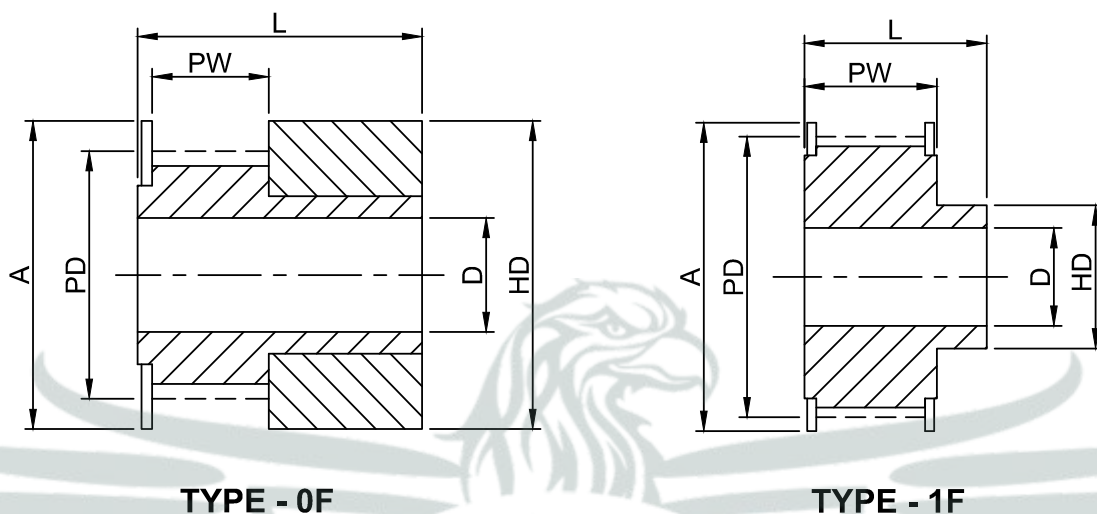
**TYPE - 1F**

## TECHNICAL SPECIFICATIONS

### 3mm Pitch Pulleys For 9mm Wide Belts Ref. 3M 09

PART NO.	PULLEY SIZE	PULLEY TYPE	MATERIAL	NO. OF TEETH	PD	A	HD	PW	L	MIM BORE (D)	MAX BORE	APPROX WEIGHT (kg)
N0320	10-3M-09	0F	ALUMINIUM	10	9.55	13.00	13.00	10.20	17.50	4.00	4.00	0.005
N0321	12-3M-09	0F	ALUMINIUM	12	11.46	15.00	15.00	10.20	17.50	4.00	6.00	0.007
N0322	14-3M-09	0F	ALUMINIUM	14	13.37	16.00	16.00	10.20	17.50	4.00	7.00	0.009
N0323	15-3M-09	0F	ALUMINIUM	15	14.32	17.50	17.50	10.20	17.50	4.00	8.00	0.011
N0324	16-3M-09	1F	ALUMINIUM	16	15.28	18.00	10.00	12.80	20.60	4.00	6.50	0.009
N0325	18-3M-09	1F	ALUMINIUM	18	17.19	20.00	11.00	12.80	20.60	6.00	7.00	0.011
N0326	20-3M-09	1F	ALUMINIUM	20	19.10	23.00	13.00	12.80	20.60	6.00	8.00	0.014
N0327	21-3M-09	1F	ALUMINIUM	21	20.05	25.00	13.00	12.80	20.60	6.00	8.50	0.017
N0328	22-3M-09	1F	ALUMINIUM	22	21.01	25.00	13.00	12.80	20.60	6.00	8.50	0.018
N0329	24-3M-09	1F	ALUMINIUM	24	22.92	25.00	13.00	12.80	20.60	6.00	8.50	0.020
N0330	26-3M-09	1F	ALUMINIUM	26	24.83	28	16	12.80	20.60	6.00	10.50	0.027
N0331	28-3M-09	1F	ALUMINIUM	28	26.74	32.00	18.00	12.80	20.60	6.00	11.50	0.033
N0332	30-3M-09	1F	ALUMINIUM	30	28.65	32.00	20.00	12.80	20.60	6.00	12.70	0.038
N0333	32-3M-09	1F	ALUMINIUM	32	30.56	36.00	22.00	12.80	20.60	6.00	14.00	0.046
N0334	36-3M-09	1F	ALUMINIUM	36	34.38	38.00	26.00	13.40	22.20	6.00	17.00	0.062
N0335	40-3M-09	1F	ALUMINIUM	40	38.20	42.00	28.00	13.40	22.20	6.00	18.50	0.077
N0336	44-3M-09	1F	ALUMINIUM	44	42.02	48.00	33.00	13.40	22.20	6.00	22.50	0.097
N0337	48-3M-09	1F	ALUMINIUM	48	45.84	52.00	33.00	13.40	22.20	8.00	25.50	0.120
N0338	60-3M-09	1F	ALUMINIUM	60	57.30	61.00	44.00	13.4	22.20	8.00	24.00	0.180
N0339	72-3M-09	1F	ALUMINIUM	72	68.75	74.00	50.00	13.40	22.20	8.00	40.00	0.260

Please note all dimensions are in mm

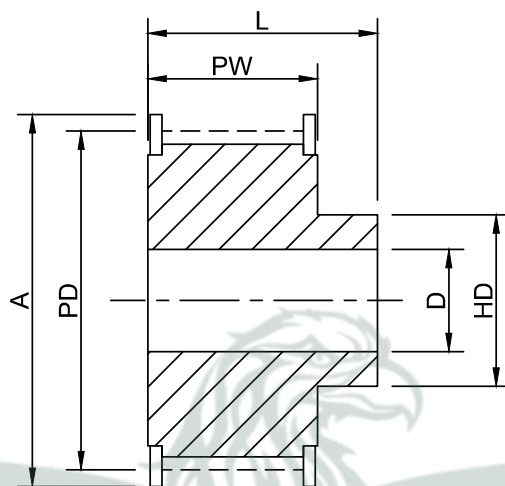


## TECHNICAL SPECIFICATIONS

### 3mm Pitch Pulleys For 15mm Wide Belts Ref. 3M 15

PART NO.	PULLEY SIZE	PULLEY TYPE	MATERIAL	NO. OF TEETH	PD	A	HD	PW	L	MIN BORE (D)	MAX BORE	APPROX WEIGHT (kg)
N0340	10-3M-15	0F	ALUMINIUM	10	9.55	13.00	13.00	17.00	26.00	4.00	4.00	0.007
N0341	12-3M-15	0F	ALUMINIUM	12	11.46	15.00	15.00	17.00	26.00	4.00	6.00	0.009
N0342	14-3M-15	0F	ALUMINIUM	14	13.37	16.00	16.00	17.00	26.00	4.00	7.00	0.012
N0343	15-3M-15	0F	ALUMINIUM	15	14.32	17.50	17.50	17.00	26.00	4.00	8.00	0.015
N0344	16-3M-15	1F	ALUMINIUM	16	15.28	18.00	10.00	19.50	26.00	4.00	6.50	0.012
N0345	18-3M-15	1F	ALUMINIUM	18	17.19	20.00	11.00	19.50	26.00	6.00	7.00	0.015
N0346	20-3M-15	1F	ALUMINIUM	20	19.10	23.00	13.00	19.50	26.0	6.00	8.00	0.020
N0347	21-3M-15	1F	ALUMINIUM	21	20.05	25.00	13.00	19.50	26.00	6.00	8.50	0.022
N0348	22-3M-15	1F	ALUMINIUM	22	21.01	25.00	13.00	19.50	26.00	6.00	8.50	0.024
N0349	24-3M-15	1F	ALUMINIUM	24	22.92	25.00	13.00	19.50	26.00	6.00	8.50	0.028
N0350	26-3M-15	1F	ALUMINIUM	26	24.83	28.00	16.00	19.50	26.00	6.00	10.50	0.036
N0351	28-3M-15	1F	ALUMINIUM	28	26.74	32.00	18.00	19.50	26.00	6.00	11.50	0.043
N0352	30-3M-15	1F	ALUMINIUM	30	28.65	32.00	20.00	19.50	26.00	6.00	12.70	0.050
N0353	32-3M-15	1F	ALUMINIUM	32	30.56	36.00	22.00	19.50	26.00	6.00	14.00	0.060
N0354	36-3M-15	1F	ALUMINIUM	36	34.38	38.00	26.00	20.00	30.00	6.00	17.00	0.082
N0355	40-3M-15	1F	ALUMINIUM	40	38.20	42.00	28.00	20.00	30.00	6.00	18.50	0.106
N0356	44-3M-15	1F	ALUMINIUM	44	42.02	48.00	33.00	20.00	30.00	6.00	22.50	0.111
N0357	48-3M-15	1F	ALUMINIUM	48	45.84	52.00	33.00	20.00	30.00	8.00	22.50	0.150
N0358	60-3M-15	1F	ALUMINIUM	60	57.30	61.00	44.00	20.00	30.00	8.00	24.00	0.220
N0359	72-3M-15	1F	ALUMINIUM	72	68.75	74.00	50.00	20.00	30.00	8.00	40.00	0.300

Please note all dimensions are in mm



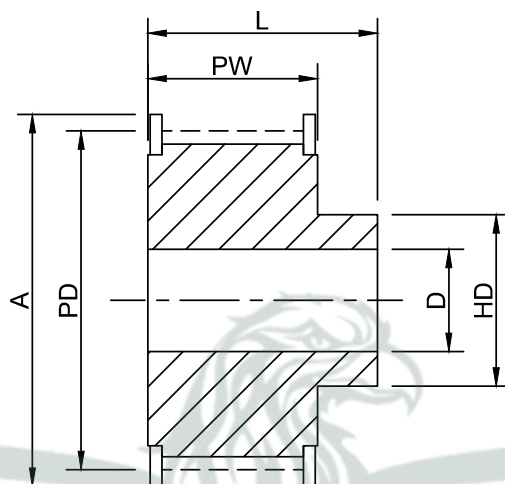
**TYPE - 1F**

## TECHNICAL SPECIFICATIONS

### 5mm Pitch Pulleys For 9 Mm Wide Belts Ref. 5M 09

PART NO.	PULLEY SIZE	PULLEY TYPE	MATERIAL	NO. OF TEETH	PD	A	HD	PW	L	MIM BORE (D)	MAX BORE	APPROX WEIGHT (kg)
N0360	12-5M-09	1F	STEEL	12	19.10	23	12	14.5	20	4	7	0.03
N0361	14-5M-09	1F	STEEL	14	22.28	25	13	14.5	20	6	8	0.04
N0362	15-5M-09	1F	STEEL	15	23.87	28	16	14.5	20	6	10	0.05
N0363	16-5M-09	1F	STEEL	16	25.46	28	16.5	14.5	20	6	11	0.06
N0364	18-5M-09	1F	STEEL	18	28.65	32	20	14.5	20	6	13	0.07
N0365	20-5M-09	1F	STEEL	20	31.83	36	23	14.5	22.5	6	14	0.10
N0366	21-5M-09	1F	STEEL	21	33.42	38	24	14.5	22.5	6	15	0.12
N0367	22-5M-09	1F	STEEL	22	35.01	38	25.5	14.5	22.5	6	16	0.13
N0368	24-5M-09	1F	STEEL	24	38.20	42	27	14.5	22.5	6	18	0.15
N0369	26-5M-09	1F	STEEL	26	41.38	44	30	14.5	22.5	6	20	0.18
N0370	28-5M-09	1F	STEEL	28	44.56	48	30.5	14.5	22.5	6	20	0.21
N0371	30-5M-09	1F	STEEL	30	47.75	51	35	14.5	22.5	6	24	0.25
N0372	32-5M-09	1F	STEEL	32	50.93	54	38	14.5	22.5	8	26	0.28
N0373	36-5M-09	1F	STEEL	36	57.30	60	38	14.5	22.5	8	26	0.33
N0374	40-5M-09	1F	STEEL	40	63.66	70	38	14.5	22.5	8	26	0.42
N0375	44-5M-09	1F	STEEL	44	70.03	75	45	14.5	25.5	8	33	0.54
N0376	48-5M-09	1F	STEEL	48	76.39	80	50	14.5	25.5	8	38	0.65
N0377	60-5M-09	1F	STEEL	60	95.49	100	65	14.5	25.5	8	53	1.05
N0378	72-5M-09	1F	STEEL	72	114.59	120	80	14.5	25.5	8	68	1.54

Please note all dimensions are in mm



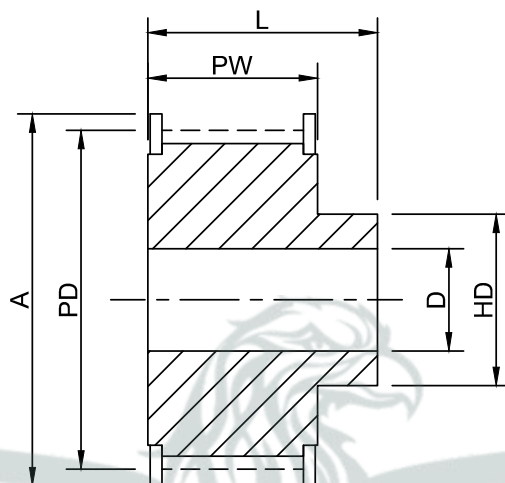
**TYPE - 1F**

## TECHNICAL SPECIFICATIONS

### 5mm Pitch Pulleys For 15 Mm Wide Belts Ref. 5M 15

PART NO.	PULLEY SIZE	PULLEY TYPE	MATERIAL	NO. OF TEETH	PD	A	HD	PW	L	MIM BORE (D)	MAX BORE	APPROX WEIGHT (kg)
N0379	12-5M-15	1F	STEEL	12	19.10	23	12	20.5	26	4	7	0.03
N0380	14-5M-15	1F	STEEL	14	22.28	25	13	20.5	26	6	8	0.04
N0381	15-5M-15	1F	STEEL	15	23.87	28	16	20.5	26	6	10	0.05
N0382	16-5M-15	1F	STEEL	16	25.46	28	16.5	20.5	26	6	11	0.06
N0383	18-5M-15	1F	STEEL	18	28.65	32	20	20.5	26	6	13	0.09
N0384	20-5M-15	1F	STEEL	20	31.83	36	23	20.5	26	6	14	0.12
N0385	21-5M-15	1F	STEEL	21	33.42	38	24	20.5	26	6	15	0.14
N0386	22-5M-15	1F	STEEL	22	35.01	38	25.5	20.5	26	6	16	0.15
N0387	24-5M-15	1F	STEEL	24	38.20	42	27	20.5	28	6	18	0.19
N0388	26-5M-15	1F	STEEL	26	41.38	44	30	20.5	28	6	20	0.23
N0389	28-5M-15	1F	STEEL	28	44.56	48	30.5	20.5	28	6	20	0.26
N0390	30-5M-15	1F	STEEL	30	47.75	51	35	20.5	28	6	24	0.32
N0391	32-5M-15	1F	STEEL	32	50.93	54	38	20.5	28	8	26	0.35
N0392	36-5M-15	1F	STEEL	36	57.30	60	38	20.5	28	8	26	0.43
N0393	40-5M-15	1F	STEEL	40	63.66	70	38	20.5	28	8	26	0.52
N0394	44-5M-15	1F	STEEL	44	70.03	75	45	20.5	30	8	33	0.70
N0395	48-5M-15	1F	STEEL	48	76.39	80	50	20.5	30	8	38	0.82
N0396	60-5M-15	1F	STEEL	60	95.49	100	65	20.5	30	8	53	1.33
N0397	72-5M-15	1F	STEEL	72	114.59	120	80	20.5	30	8	68	1.95

Please note all dimensions are in mm



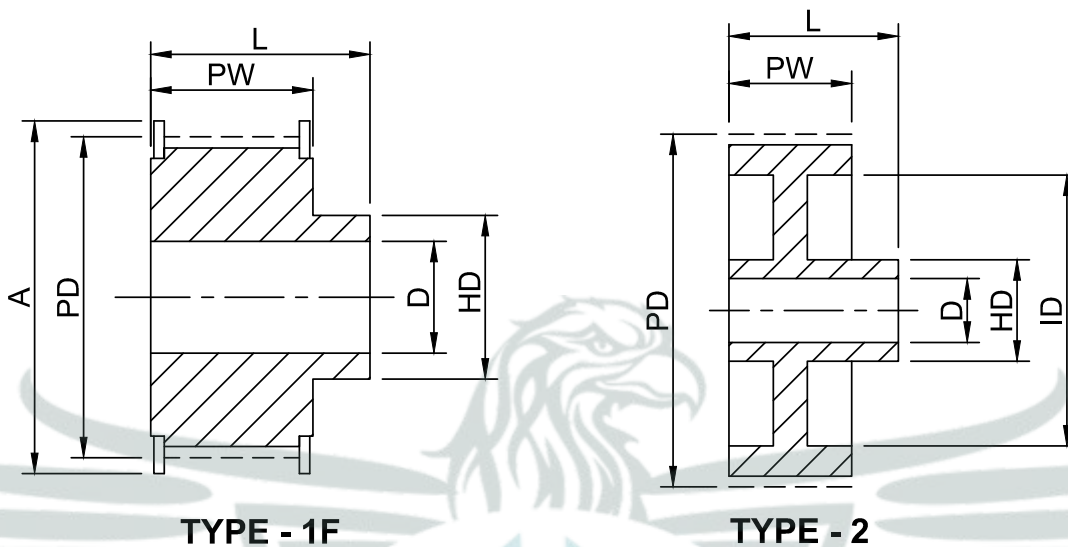
TYPE - 1F

## TECHNICAL SPECIFICATIONS

### 5mm Pitch Pulleys For 25mm Wide Belts Ref. 5M 25

PART NO.	PULLEY SIZE	PULLEY TYPE	MATERIAL	NO. OF TEETH	PD	A	HD	PW	L	MIM BORE (D)	MAX BORE	APPROX WEIGHT (kg)
N0398	12-5M-25	1F	STEEL	12	19.10	23	12.0	30.5	36	4	7	0.05
N0399	14-5M-25	1F	STEEL	14	22.28	25	13.0	30.5	36	6	8	0.08
N0400	15-5M-25	1F	STEEL	15	23.87	28	16.0	30.5	36	6	10	0.09
N0401	16-5M-25	1F	STEEL	16	25.46	28	16.5	30.5	36	6	11	0.11
N0402	18-5M-25	1F	STEEL	18	28.65	32	20.0	30.5	36	6	13	0.13
N0403	20-5M-25	1F	STEEL	20	31.83	36	23.0	30.5	36	6	14	0.17
N0404	21-5M-25	1F	STEEL	21	33.42	38	24.0	30.5	38	6	15	0.20
N0405	22-5M-25	1F	STEEL	22	35.01	38	25.5	30.5	38	6	16	0.22
N0406	24-5M-25	1F	STEEL	24	38.20	42	27.0	30.5	38	6	18	0.26
N0407	26-5M-25	1F	STEEL	26	41.38	44	30.0	30.5	38	6	20	0.32
N0408	28-5M-25	1F	STEEL	28	44.56	48	30.5	30.5	38	6	20	0.37
N0409	30-5M-25	1F	STEEL	30	47.75	51	35.0	30.5	38	6	24	0.44
N0410	32-5M-25	1F	STEEL	32	50.93	54	38.0	30.5	38	8	26	0.48
N0411	36-5M-25	1F	STEEL	36	57.30	60	38.0	30.5	38	8	26	0.59
N0412	40-5M-25	1F	STEEL	40	63.66	70	38.0	30.5	38	8	26	0.75
N0413	44-5M-25	1F	STEEL	44	70.03	75	45.0	30.5	40	8	33	0.97
N0414	48-5M-25	1F	STEEL	48	76.39	80	50.0	30.5	40	8	38	1.20
N0415	60-5M-25	1F	STEEL	60	95.49	100	65.0	30.5	40	8	53	1.85
N0416	72-5M-25	1F	STEEL	72	114.59	120	80.0	30.5	40	8	68	2.71

Please note all dimensions are in mm

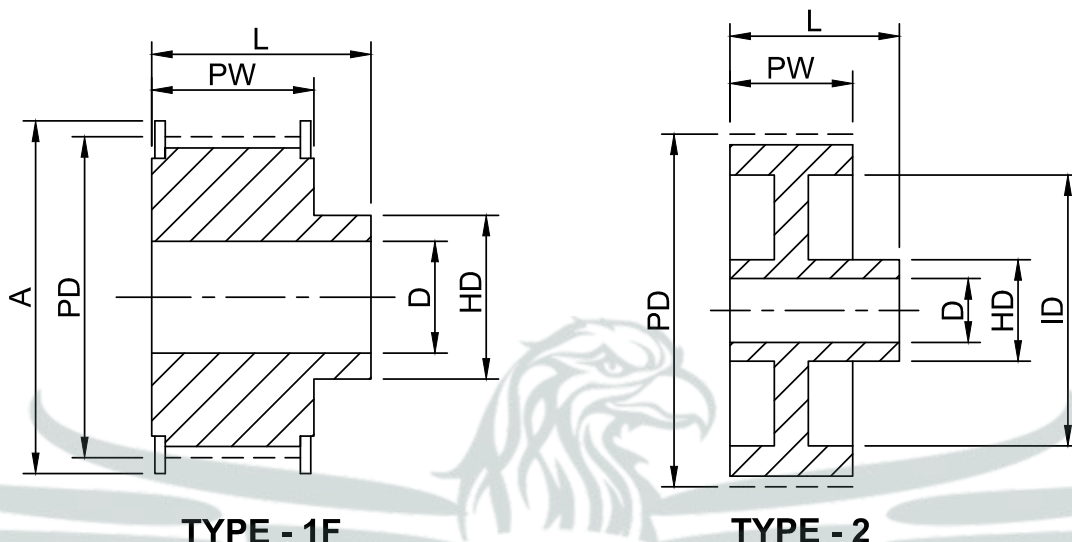


## TECHNICAL SPECIFICATIONS

### 8mm Pitch Pulleys For 20mm Wide Belts Ref. 8M 20

PART NO.	PULLEY SIZE	PULLEY TYPE	MATERIAL	NO. OF TEETH	PD	A	HD	ID	PW	L	MIM BORE (D)	MAX BORE	APPROX WEIGHT (kg)
N0417	18-8M-20	1F	STEEL	18	45.83	49	33	-	28	40	10	19	0.34
N0418	20-8M-20	1F	STEEL	20	50.92	57	38	-	28	40	10	24	0.43
N0419	22-8M-20	1F	STEEL	22	56.02	60	43	-	28	40	12	29	0.54
N0420	24-8M-20	1F	STEEL	24	61.12	66	45	-	28	40	12	30	0.65
N0421	26-8M-20	1F	STEEL	26	66.21	70	48	-	28	40	12	32	0.80
N0422	28-8M-20	1F	STEEL	28	71.30	75	50	-	28	40	15	34	0.87
N0423	30-8M-20	1F	STEEL	30	76.39	83	55	-	28	40	15	36	1.02
N0424	32-8M-20	1F	STEEL	32	81.49	87	60	-	28	40	15	40	1.20
N0425	34-8M-20	1F	STEEL	34	86.58	91	70	-	28	40	15	46	1.40
N0426	36-8M-20	1F	STEEL	36	91.67	97	75	-	28	40	15	50	1.55
N0427	38-8M-20	1F	STEEL	38	96.77	102	75	-	28	40	15	50	1.65
N0428	40-8M-20	1F	STEEL	40	101.86	106	75	-	28	40	15	50	1.74
N0429	44-8M-20	1F	STEEL	44	112.05	120	75	-	28	40	15	50	2.10
N0430	48-8M-20	1F	STEEL	48	122.23	128	75	-	28	40	15	50	2.44
N0431	56-8M-20	1F	STEEL	56	142.60	150	80	-	28	40	15	54	3.77
N0432	64-8M-20	1F	STEEL	64	162.97	168	80	-	28	40	15	54	4.80
N0433	72-8M-20	1F	STEEL	72	183.35	192	80	-	28	40	15	54	5.97
N0434	80-8M-20	2	CAST IRON	80	203.72	-	90	180	28	40	15	54	3.80
N0435	90-8M-20	2	CAST IRON	90	229.18	-	90	204	28	40	15	54	4.20
N0436	112-8M-20	2	CAST IRON	112	285.21	-	90	254	28	40	18	54	5.20
N0437	144-8M-20	2	CAST IRON	144	366.69	-	90	336	28	40	20	54	7.50
N0438	168-8M-20	2	CAST IRON	168	427.81	-	100	400	28	40	20	60	10.00
N0439	192-8M-20	2	CAST IRON	192	488.92	-	100	460	28	40	20	60	14.40

Please note all dimensions are in mm

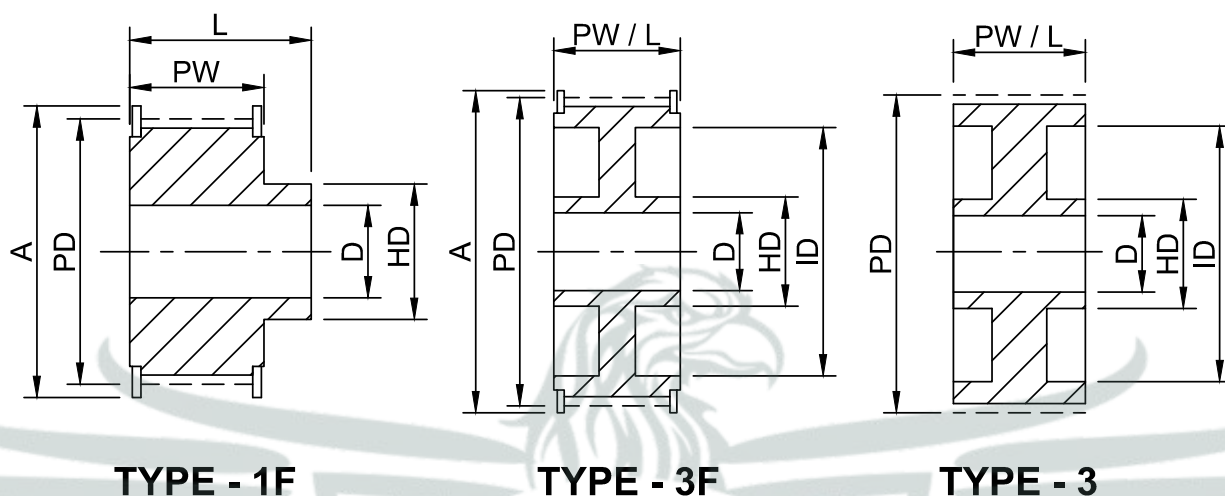


## TECHNICAL SPECIFICATIONS

### 8mm Pitch Pulleys For 30mm Wide Belts Ref. 8M 30

PART NO.	PULLEY SIZE	PULLEY TYPE	MATERIAL	NO. OF TEETH	PD	A	HD	ID	PW	L	MIM BORE (D)	MAX BORE	APPROX WEIGHT (kg)
N0440	18-8M-30	1F	STEEL	18	45.83	49	33	-	38	50	10	19	0.55
N0441	20-8M-30	1F	STEEL	20	50.92	57	38	-	38	50	10	24	0.64
N0442	22-8M-30	1F	STEEL	22	56.02	60	43	-	38	50	12	29	0.69
N0443	24-8M-30	1F	STEEL	24	61.12	66	45	-	38	50	12	30	0.84
N0444	26-8M-30	1F	STEEL	26	66.21	70	48	-	38	50	12	32	1.00
N0445	28-8M-30	1F	STEEL	28	71.30	75	50	-	38	50	15	34	1.12
N0446	30-8M-30	1F	STEEL	30	76.39	83	55	-	38	50	15	36	1.32
N0447	32-8M-30	1F	STEEL	32	81.49	87	60	-	38	50	15	40	1.53
N0448	34-8M-30	1F	STEEL	34	86.58	91	70	-	38	50	15	46	1.80
N0449	36-8M-30	1F	STEEL	36	91.67	97	75	-	38	50	15	50	1.99
N0450	38-8M-30	1F	STEEL	38	96.77	102	75	-	38	50	15	50	2.27
N0451	40-8M-30	1F	STEEL	40	101.86	106	75	-	38	50	15	50	2.40
N0452	44-8M-30	1F	STEEL	44	112.05	120	75	-	38	50	15	50	2.80
N0453	48-8M-30	1F	STEEL	48	112.23	128	75	-	38	50	15	50	3.20
N0454	56-8M-30	1F	STEEL	56	142.60	150	90	-	38	50	15	54	5.60
N0455	64-8M-30	1F	STEEL	64	162.97	168	90	-	38	50	15	54	6.50
N0456	72-8M-30	1F	STEEL	72	183.35	192	95	-	38	50	15	54	8.10
N0457	80-8M-30	2	CAST IRON	80	203.72	-	100	180	38	50	15	54	5.10
N0458	90-8M-30	2	CAST IRON	90	229.18	-	100	204	38	50	15	54	5.70
N0459	112-8M-30	2	CAST IRON	112	285.21	-	100	254	38	50	18	54	6.80
N0460	144-8M-30	2	CAST IRON	144	366.69	-	100	336	38	50	20	54	9.30
N0461	168-8M-30	2	CAST IRON	168	427.81	-	100	400	38	50	20	60	11.40
N0462	192-8M-30	2	CAST IRON	192	488.92	-	100	460	38	50	20	60	16.00

Please note all dimensions are in mm



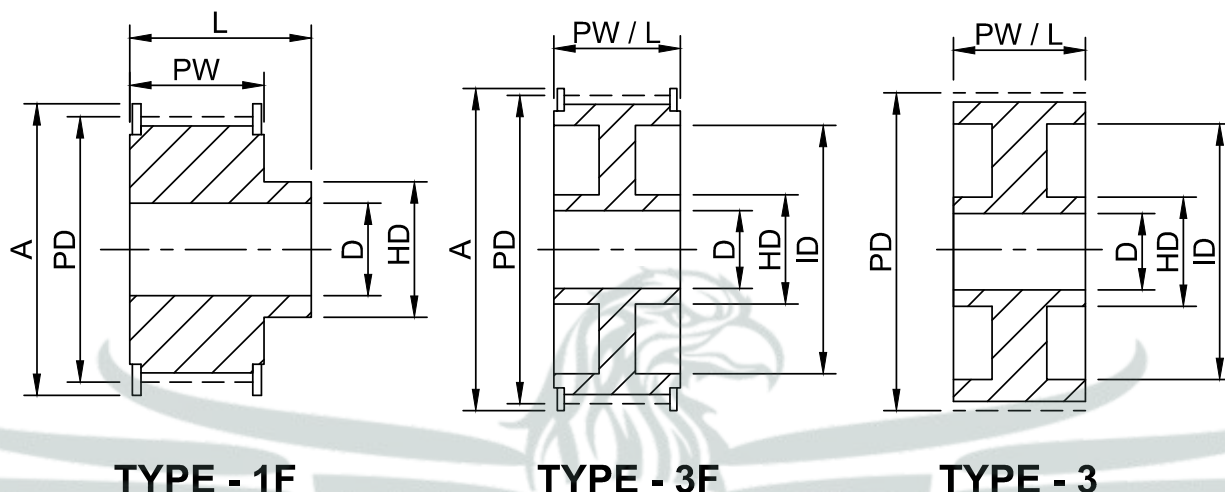
## TECHNICAL SPECIFICATIONS

### 8mm Pitch Pulleys For 50mm Wide Belts Ref. 8M 50

PART NO.	PULLEY SIZE	PULLEY TYPE	MATERIAL	NO. OF TEETH	PD	A	HD	ID	PW	L	MIM BORE (D)	MAX BORE	APPROX WEIGHT (kg)
N0463	22-8M-50	1F	STEEL	22	56.02	60	43	-	60	72	12	29	1.00
N0464	24-8M-50	1F	STEEL	24	61.12	66	45	-	60	72	12	30	1.23
N0465	26-8M-50	1F	STEEL	26	66.21	70	48	-	60	72	15	32	1.50
N0466	28-8M-50	1F	STEEL	28	71.30	75	50	-	60	72	15	34	1.67
N0467	30-8M-50	1F	STEEL	30	76.39	83	55	-	60	72	15	36	1.97
N0468	32-8M-50	1F	STEEL	32	81.49	87	60	-	60	72	15	40	2.27
N0469	34-8M-50	1F	STEEL	34	86.58	91	66	-	60	72	15	44	2.69
N0470	36-8M-50	1F	STEEL	36	91.67	97	70	-	60	72	15	46	2.97
N0471	38-8M-50	1F	STEEL	38	96.77	102	75	-	60	72	15	50	3.23
N0472	40-8M-50	1F	STEEL	40	101.86	106	75	-	60	72	18	50	3.50
N0473	44-8M-50	1F	STEEL	44	112.05	120	75	-	60	72	18	50	3.90
N0474	48-8M-50	1F	STEEL	48	122.23	128	80	-	60	72	18	54	4.30
N0475	56-8M-50	1F	STEEL	56	142.60	150	90	-	60	72	18	60	5.00
N0476	64-8M-50	3F	STEEL	64	162.97	168	100	137	60	60	18	67	5.60
N0477	72-8M-50	3F	STEEL	72	183.35	192	100	158	60	60	18	67	6.80
N0478	80-8M-50	3	CAST IRON	80	203.72	-	110	180	60	60	18	66	6.90
N0479	90-8M-50	3	CAST IRON	90	229.18	-	110	204	60	60	18	66	8.60
N0480	112-8M-50	3	CAST IRON	112	285.21	-	110	254	60	60	18	66	9.60
N0481	144-8M-50	3	CAST IRON	144	366.69	-	110	336	60	60	20	66	13.80
N0482	168-8M-50	3	CAST IRON	168	427.81	-	120	400	60	60	20	72	16.00
N0483	192-8M-50	3	CAST IRON	192	488.92	-	130	460	60	60	20	78	22.40

Please note all dimensions are in mm



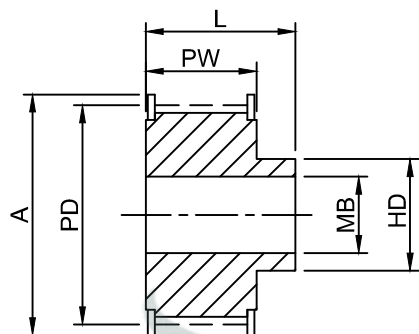


## TECHNICAL SPECIFICATIONS

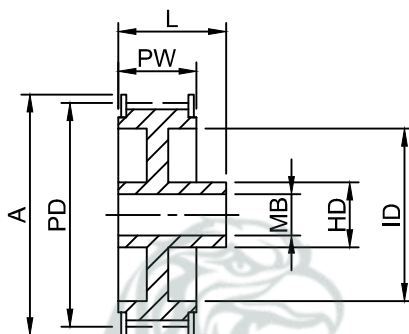
### 8mm Pitch Pulleys For 85mm Wide Belts Ref. 8M 85

PART NO.	PULLEY SIZE	PULLEY TYPE	MATERIAL	NO. OF TEETH	PD	A	HD	ID	PW	L	MIM BORE (D)	MAX BORE	APPROX WEIGHT (kg)
N0484	22-8M-85	1F	STEEL	22	56.02	60	43	-	95	107	12	29	1.55
N0485	24-8M-85	1F	STEEL	24	61.12	66	45	-	95	107	12	30	1.90
N0486	26-8M-85	1F	STEEL	26	66.21	70	48	-	95	107	12	32	2.25
N0487	28-8M-85	1F	STEEL	28	71.30	75	50	-	95	107	15	34	2.55
N0488	30-8M-85	1F	STEEL	30	76.39	83	55	-	95	107	15	36	3.00
N0489	32-8M-85	1F	STEEL	32	81.49	87	60	-	95	107	15	40	3.57
N0490	34-8M-85	1F	STEEL	34	86.58	91	66	-	95	107	15	44	4.00
N0491	36-8M-85	1F	STEEL	36	91.67	97	70	-	95	107	15	46	4.50
N0492	38-8M-85	1F	STEEL	38	96.77	102	75	-	95	107	15	50	5.00
N0493	40-8M-85	1F	STEEL	40	101.86	106	75	-	95	107	18	50	5.20
N0494	44-8M-85	1F	STEEL	44	112.05	120	75	-	95	107	18	50	6.60
N0495	48-8M-85	1F	STEEL	48	122.23	128	80	-	95	107	18	54	7.00
N0496	56-8M-85	1F	STEEL	56	142.60	150	90	-	95	107	18	60	10.00
N0497	64-8M-85	3F	STEEL	64	162.97	168	100	137	95	95	20	67	10.40
N0498	72-8M-85	3F	STEEL	72	183.35	192	100	158	95	95	20	67	11.40
N0499	80-8M-85	3	CAST IRON	80	203.72	-	110	180	95	95	20	66	11.10
N0500	90-8M-85	3	CAST IRON	90	229.18	-	110	204	95	95	20	66	12.20
N0501	112-8M-85	3	CAST IRON	112	285.21	-	110	254	95	95	24	66	15.00
N0502	144-8M-85	3	CAST IRON	144	366.69	-	110	336	95	95	24	66	21.50
N0503	168-8M-85	3	CAST IRON	168	427.81	-	120	400	95	95	24	72	24.10
N0504	192-8M-85	3	CAST IRON	192	488.92	-	130	460	95	95	24	78	30.60

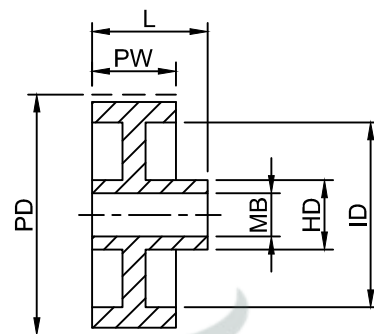
Please note all dimensions are in mm



**TYPE - 1F**



**TYPE - 2F**



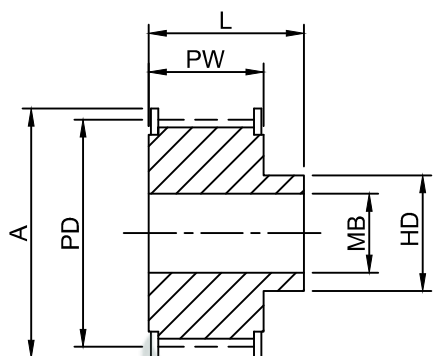
**TYPE - 2**

## TECHNICAL SPECIFICATIONS

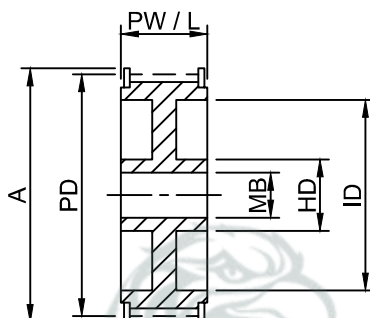
### 14mm Pitch Pulleys For 40 mm Wide Belts Ref. 14M 40

PART NO.	PULLEY SIZE	PULLEY TYPE	MATERIAL	NO. OF TEETH	PD	A	HD	ID	PW	L	MIM BORE (D)	MAX BORE	APPROX WEIGHT (kg)
N0505	28-14M-40	1F	STEEL	28	124.78	128	100	-	54.0	69.0	24.0	67.0	4.80
N0506	30-14M-40	1F	STEEL	30	133.69	138	100	-	54.0	69.0	24.0	67.0	5.60
N0507	32-14M-40	1F	STEEL	32	142.60	154	100	-	54.0	69.0	24.0	67.0	6.20
N0508	34-14M-40	1F	STEEL	34	151.52	160	100	-	54.0	69.0	24.0	67.0	6.90
N0509	36-14M-40	1F	STEEL	36	160.43	168	100	-	54.0	69.0	24.0	67.0	7.70
N0510	38-14M-40	1F	STEEL	38	169.34	184	120	-	54.0	69.0	24.0	80.0	8.28
N0511	40-14M-40	1F	STEEL	40	178.25	188	120	-	54.0	69.0	24.0	80.0	9.26
N0512	44-14M-40	1F	STEEL	44	196.08	212	120	-	54.0	69.0	24.0	80.0	10.32
N0513	48-14M-40	2F	CAST IRON	48	213.90	226	135	170	54.0	69.0	24.0	82.0	11.50
N0514	56-14M-40	2F	CAST IRON	56	249.55	256	135	207	54.0	69.0	28.0	82.0	13.05
N0515	64-14M-40	2F	CAST IRON	64	285.21	296	135	240	54.0	69.0	28.0	82.0	14.40
N0516	72-14M-40	2	CAST IRON	72	320.86	-	135	278	54.0	69.0	28.0	82.0	16.90
N0517	80-14M-40	2	CAST IRON	80	356.51	-	135	314	54.0	69.0	28.0	82.0	18.50
N0518	90-14M-40	2	CAST IRON	90	401.07	-	135	358	54.0	69.0	28.0	82.0	20.00
N0519	112-14M-40	2	CAST IRON	112	499.11	-	135	456	54.0	69.0	28.0	82.0	26.70
N0520	144-14M-40	2	CAST IRON	144	641.71	-	135	600	54.0	69.0	28.0	82.0	35.00
N0521	168-14M-40	2	CAST IRON	168	748.66	-	135	706	54.0	69.0	28.0	82.0	44.20
N0522	192-14M-40	2	CAST IRON	192	855.62	-	135	813	54.0	69.0	28.0	82.0	52.20

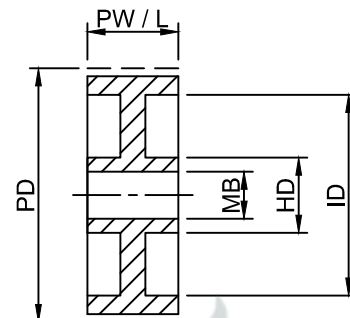
Please note all dimensions are in mm



**TYPE - 1F**



**TYPE - 3F**



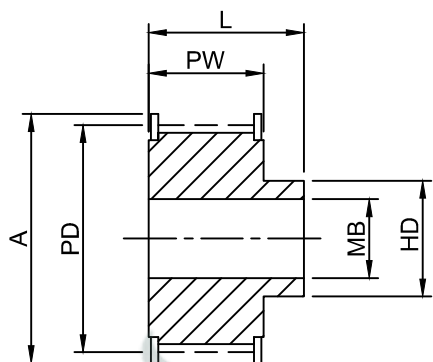
**TYPE - 3**

## TECHNICAL SPECIFICATIONS

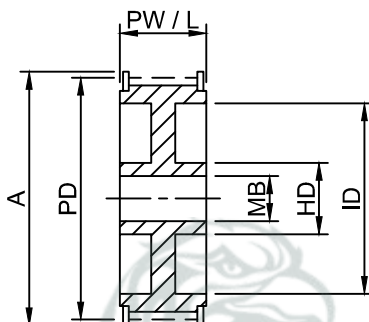
### 14mm Pitch Pulleys For 55 mm Wide Belts Ref. 14M 55

PART NO.	PULLEY SIZE	PULLEY TYPE	MATERIAL	NO. OF TEETH	PD	A	HD	ID	PW	L	MIM BORE (D)	MAX BORE	APPROX WEIGHT (kg)
N0523	28-14M-55	1F	STEEL	28	124.78	128	100	-	70.0	85.0	24.0	67.0	5.70
N0524	30-14M-55	1F	STEEL	30	133.69	138	100	-	70.0	85.0	24.0	67.0	6.60
N0525	32-14M-55	1F	STEEL	32	142.60	154	100	-	70.0	85.0	24.0	67.0	7.90
N0526	34-14M-55	1F	STEEL	34	151.52	160	100	-	70.0	85.0	24.0	67.0	8.60
N0527	36-14M-55	1F	STEEL	36	160.43	168	100	-	70.0	85.0	24.0	67.0	9.60
N0528	38-14M-55	1F	STEEL	38	169.34	184	120	-	70.0	85.0	24.0	80.0	10.80
N0529	40-14M-55	1F	STEEL	40	178.25	188	120	-	70.0	85.0	24.0	80.0	11.20
N0530	44-14M-55	1F	STEEL	44	196.08	212	120	-	70.0	85.0	24.0	80.0	12.50
N0531	48-14M-55	3F	CAST IRON	48	213.90	226	135	170	70.0	70.0	28.0	82.0	13.50
N0532	56-14M-55	3F	CAST IRON	56	249.55	256	135	207	70.0	70.0	28.0	82.0	14.50
N0533	64-14M-55	3F	CAST IRON	64	285.21	296	135	240	70.0	70.0	28.0	82.0	15.60
N0534	72-14M-55	3	CAST IRON	72	320.86	-	135	278	70.0	70.0	28.0	82.0	16.90
N0535	80-14M-55	3	CAST IRON	80	356.51	-	135	314	70.0	70.0	28.0	82.0	20.27
N0536	90-14M-55	3	CAST IRON	90	401.07	-	135	358	70.0	70.0	28.0	82.0	22.60
N0537	112-14M-55	3	CAST IRON	112	499.11	-	135	456	70.0	70.0	28.0	82.0	29.29
N0538	144-14M-55	3	CAST IRON	144	641.71	-	135	600	70.0	70.0	28.0	82.0	39.00
N0539	168-14M-55	3	CAST IRON	168	748.66	-	135	706	70.0	70.0	28.0	82.0	48.50
N0540	192-14M-55	3	CAST IRON	192	855.62	-	135	813	70.0	70.0	28.0	82.0	57.80

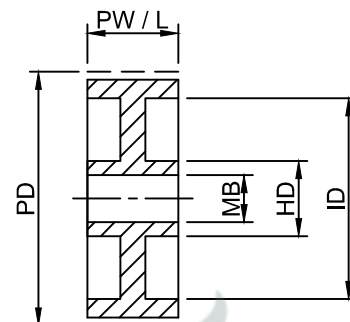
Please note all dimensions are in mm



**TYPE - 1F**



**TYPE - 3F**



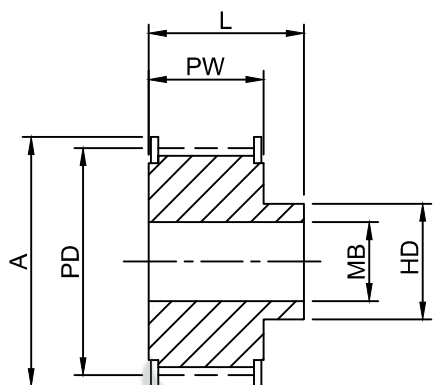
**TYPE - 3**

## TECHNICAL SPECIFICATIONS

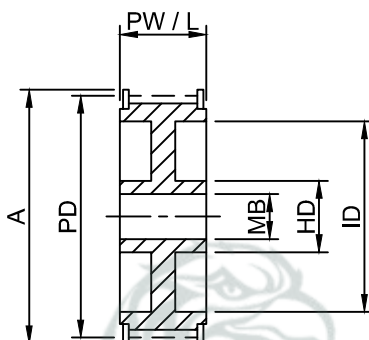
### 14mm Pitch Pulleys For 85 mm Wide Belts Ref. 14M 85

PART NO.	PULLEY SIZE	PULLEY TYPE	MATERIAL	NO. OF TEETH	PD	A	HD	ID	PW	L	MIM BORE (D)	MAX BORE	APPROX WEIGHT (kg)
N0541	28-14M-85	1F	STEEL	28	124.78	128	100	-	102	117	24.0	67.0	7.70
N0542	30-14M-85	1F	STEEL	30	133.69	138	100	-	102	117	24.0	67.0	9.10
N0543	32-14M-85	1F	STEEL	32	142.60	154	100	-	102	117	24.0	67.0	10.50
N0544	34-14M-85	1F	STEEL	34	151.52	160	100	-	102	117	24.0	67.0	11.90
N0545	36-14M-85	1F	STEEL	36	160.43	168	100	-	102	117	32.0	67.0	13.20
N0546	38-14M-85	1F	STEEL	38	169.34	184	120	-	102	117	32.0	80.0	15.15
N0547	40-14M-85	1F	STEEL	40	178.25	188	135	-	102	117	32.0	90.0	17.10
N0548	44-14M-85	1F	STEEL	44	196.08	212	135	-	102	117	32.0	90.0	23.30
N0549	48-14M-85	1F	STEEL	48	213.90	226	150	-	102	117	32.0	100.0	25.00
N0550	56-14M-85	3F	CAST IRON	56	249.55	256	150	207	102	102	32.0	90.0	25.00
N0551	64-14M-85	3F	CAST IRON	64	285.21	296	150	240	102	102	32.0	90.0	30.50
N0552	72-14M-85	3	CAST IRON	72	320.86	-	150	278	102	102	32.0	90.0	28.26
N0553	80-14M-85	3	CAST IRON	80	356.51	-	150	314	102	102	32.0	90.0	30.10
N0554	90-14M-85	3	CAST IRON	90	401.07	-	150	358	102	102	32.0	90.0	33.00
N0555	112-14M-85	3	CAST IRON	112	499.11	-	150	456	102	102	32.0	90.0	41.80
N0556	144-14M-85	3	CAST IRON	144	641.71	-	150	600	102	102	32.0	90.0	52.40
N0557	168-14M-85	3	CAST IRON	168	748.66	-	150	706	102	102	32.0	90.0	60.30
N0558	192-14M-85	3	CAST IRON	192	855.62	-	165	813	102	102	32.0	100.0	70.20

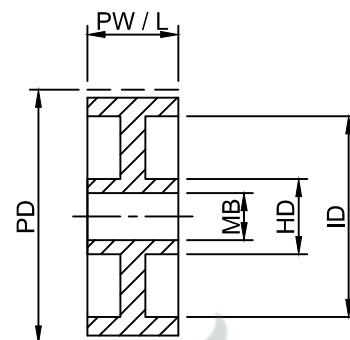
Please note all dimensions are in mm



**TYPE - 1F**



**TYPE - 3F**



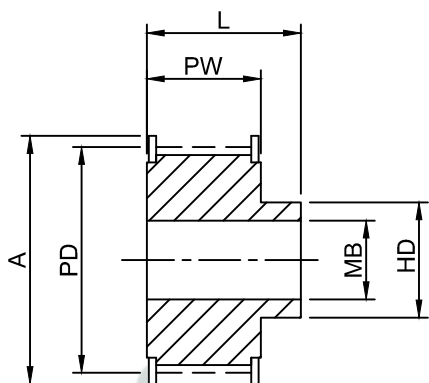
**TYPE - 3**

## TECHNICAL SPECIFICATIONS

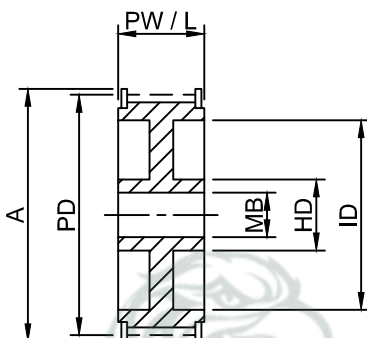
### 14mm Pitch Pulleys For 115 mm Wide Belts Ref. 14M 115

PART NO.	PULLEY SIZE	PULLEY TYPE	MATERIAL	NO. OF TEETH	PD	A	HD	ID	PW	L	MIM BORE (D)	MAX BORE	APPROX WEIGHT (kg)
N0559	28-14M-115	1F	STEEL	28	124.78	128	100	-	133	148	32.0	67.0	9.20
N0560	30-14M-115	1F	STEEL	30	133.69	138	100	-	133	148	32.0	67.0	11.20
N0561	32-14M-115	1F	STEEL	32	142.60	154	100	-	133	148	32.0	67.0	13.20
N0562	34-14M-115	1F	STEEL	34	151.52	160	100	-	133	148	32.0	67.0	14.80
N0563	36-14M-115	1F	STEEL	36	160.43	168	100	-	133	148	32.0	67.0	16.60
N0564	38-14M-115	1F	STEEL	38	169.34	184	120	-	133	148	32.0	80.0	19.20
N0565	40-14M-115	1F	STEEL	40	178.25	188	135	-	133	148	32.0	90.0	20.56
N0566	44-14M-115	1F	STEEL	44	196.08	212	140	-	133	148	32.0	94.0	21.93
N0567	48-14M-115	1F	STEEL	48	213.90	226	150	-	133	148	32.0	100.0	25.00
N0568	56-14M-115	1F	STEEL	56	249.55	256	150	-	133	148	32.0	100.0	27.50
N0569	64-14M-115	3F	CAST IRON	64	285.21	296	150	240	133	133	32.0	90.0	30.10
N0570	72-14M-115	3	CAST IRON	72	320.86	-	150	278	133	133	32.0	90.0	32.83
N0571	80-14M-115	3	CAST IRON	80	356.51	-	150	314	133	133	32.0	90.0	35.55
N0572	90-14M-115	3	CAST IRON	90	401.07	-	150	358	133	133	32.0	90.0	41.00
N0573	112-14M-115	3	CAST IRON	112	499.11	-	150	456	133	133	32.0	90.0	54.40
N0574	144-14M-115	3	CAST IRON	144	641.71	-	165	600	133	133	32.0	100.0	67.80
N0575	168-14M-115	3	CAST IRON	168	748.66	-	165	706	133	133	32.0	100.0	75.80
N0576	192-14M-115	3	CAST IRON	192	855.62	-	165	813	133	133	32.0	100.0	88.30

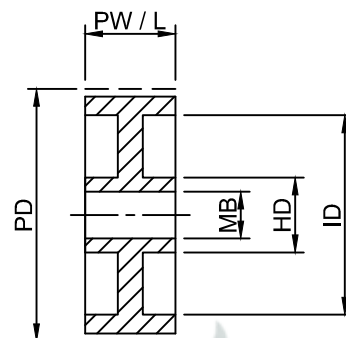
Please note all dimensions are in mm



**TYPE - 1F**



**TYPE - 3F**



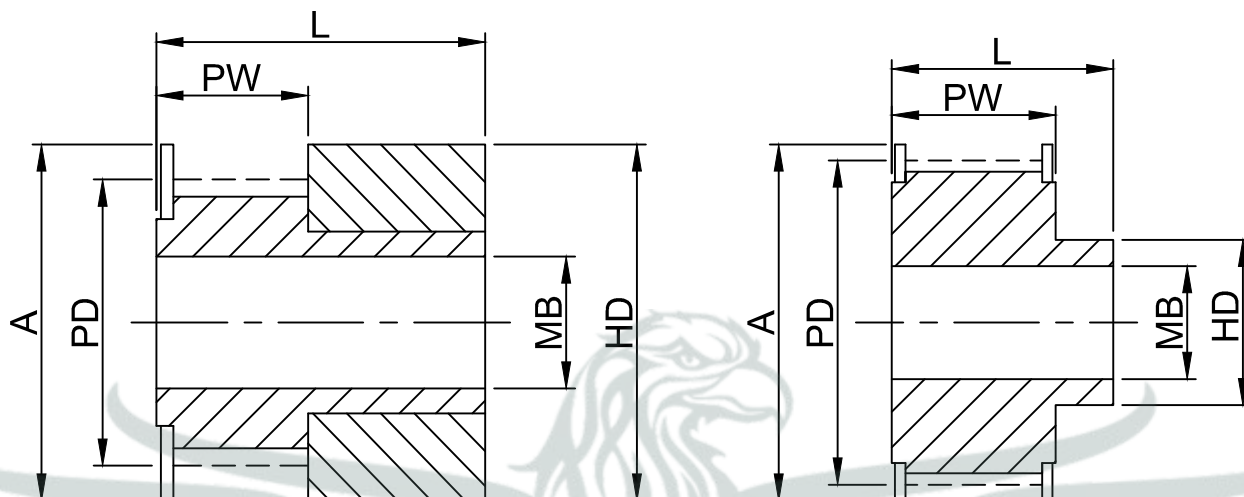
**TYPE - 3**

## TECHNICAL SPECIFICATIONS

### 14mm Pitch Pulleys For 170 mm Wide Belts Ref. 14M 170

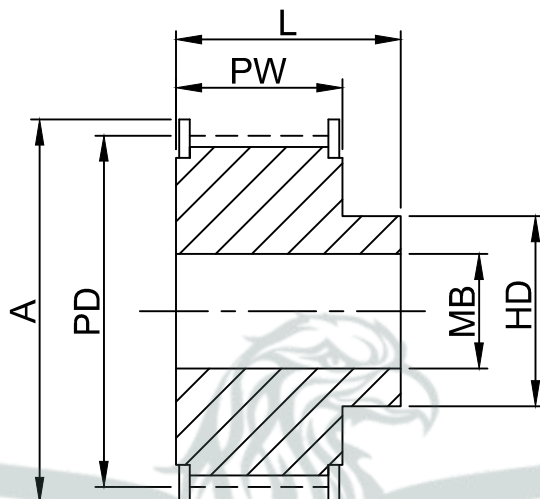
PART NO.	PULLEY SIZE	PULLEY TYPE	MATERIAL	NO. OF TEETH	PD	A	HD	ID	PW	L	MIM BORE (D)	MAX BORE	APPROX WEIGHT (kg)
N0577	28-14M-170	1F	STEEL	28	124.78	128	100	-	187	202	32.0	67.0	14.80
N0578	30-14M-170	1F	STEEL	30	133.69	138	100	-	187	202	32.0	67.0	16.70
N0579	32-14M-170	1F	STEEL	32	142.60	154	100	-	187	202	32.0	67.0	19.40
N0580	34-14M-170	1F	STEEL	34	151.52	160	100	-	187	202	32.0	67.0	21.85
N0581	36-14M-170	1F	STEEL	36	160.43	168	100	-	187	202	32.0	80.0	25.20
N0582	38-14M-170	1F	STEEL	38	169.34	184	120	-	187	202	32.0	90.0	28.40
N0583	40-14M-170	1F	STEEL	40	178.25	188	135	-	187	202	32.0	90.0	32.26
N0584	48-14M-170	1F	STEEL	48	213.90	226	150	-	187	202	32.0	90.0	39.50
N0585	64-14M-170	3F	STEEL	64	285.21	296	150	240	187	187	32.0	90.0	54.00
N0586	80-14M-170	3	CAST IRON	80	356.51	-	150	314	187	187	32.0	108.0	69.40
N0587	90-14M-170	3	CAST IRON	90	401.07	-	150	358	187	187	32.0	108.0	71.30
N0588	112-14M-170	3	CAST IRON	112	499.11	-	150	456	187	187	32.0	108.0	88.00
N0589	144-14M-170	3	CAST IRON	144	641.71	-	165	600	187	187	32.0	108.0	113.00
N0590	192-14M-170	3	CAST IRON	192	855.62	-	165	813	187	187	32.0	108.0	140.00

Please note all dimensions are in mm


**TYPE - 0F**
**TYPE - 1F**
**TECHNICAL SPECIFICATIONS**
**T2.5mm Pitch Pulleys for 6mm Width Belts. Ref. T2.5-06W**

PART NO.	PULLEY SIZE	PULLEY TYPE	MATERIAL	NO. OF TEETH	PD	A	HD	PW	L	MIN BORE (MB)	MAX BORE	APPROX WEIGHT (kg)
N0898	16 T2.5 / 12 - 2	0F	ALUMINUM	12	9.55	13.00	13.00	9.00	16.00	4.00	4.00	0.01
N0899	16 T2.5 / 14 - 2	0F	ALUMINUM	14	11.14	15.00	15.00	9.00	16.00	4.00	6.00	0.01
N0900	16 T2.5 / 15 - 2	0F	ALUMINUM	15	11.94	15.00	15.00	9.00	16.00	4.00	6.00	0.01
N0901	16 T2.5 / 16 - 2	0F	ALUMINUM	16	12.73	16.00	16.00	9.00	16.00	4.00	7.00	0.01
N0902	16 T2.5 / 18 - 2	1F	ALUMINUM	18	14.32	17.50	10.00	10.00	16.00	4.00	6.00	0.01
N0903	16 T2.5 / 19 - 2	1F	ALUMINUM	19	15.12	18.00	10.00	16.00	16.00	4.00	6.00	0.01
N0904	16 T2.5 / 20 - 2	1F	ALUMINUM	20	15.92	20.00	10.00	10.00	16.00	4.00	6.00	0.01
N0905	16 T2.5 / 22 - 2	1F	ALUMINUM	22	17.51	23.00	10.00	10.00	16.00	4.00	6.00	0.01
N0906	16 T2.5 / 24 - 2	1F	ALUMINUM	24	19.10	23.00	12.00	10.00	16.00	4.00	6.00	0.01
N0907	16 T2.5 / 25 - 2	1F	ALUMINUM	25	19.90	23.00	13.00	10.00	16.00	4.00	8.00	0.01
N0908	16 T2.5 / 26 - 2	1F	ALUMINUM	26	20.70	25.00	14.00	10.00	16.00	4.00	8.00	0.01
N0909	16 T2.5 / 28 - 2	1F	ALUMINUM	28	22.28	25.00	14.00	10.00	16.00	4.00	8.00	0.02
N0910	16 T2.5 / 30 - 2	1F	ALUMINUM	30	23.87	28.00	16.00	10.00	16.00	6.00	10.00	0.02
N0911	16 T2.5 / 32 - 2	1F	ALUMINUM	32	25.47	32.00	16.00	10.00	16.00	6.00	10.00	0.02
N0912	16 T2.5 / 36 - 2	1F	ALUMINUM	36	28.65	36.00	20.00	10.00	16.00	6.00	12.00	0.03
N0913	16 T2.5 / 40 - 2	1F	ALUMINUM	40	31.83	38.00	22.00	10.00	16.00	6.00	12.00	0.03
N0914	16 T2.5 / 44 - 2	1F	ALUMINUM	44	35.02	42.00	24.00	10.00	16.00	6.00	14.00	0.04
N0915	16 T2.5 / 48 - 2	1F	ALUMINUM	48	38.20	42.00	26.00	10.00	16.00	6.00	18.00	0.05
N0916	16 T2.5 / 60 - 2	1F	ALUMINUM	60	47.75	52.00	34.00	10.00	16.00	8.00	22.00	0.07

Please note all dimensions are in mm



**TYPE - 1F**

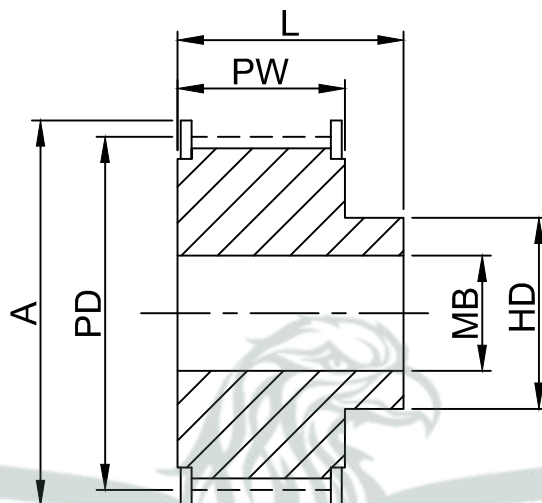
**TECHNICAL SPECIFICATIONS**

**T5mm Pitch Pulleys for 10mm Width Belts. Ref. T5-10W**

PART NO.	PULLEY SIZE	PULLEY TYPE	MATERIAL	NO. OF TEETH	PD	A	HD	PW	L	MIN BORE (MB)	MAX BORE	APPROX WEIGHT (kg)
N0917	21 T5 / 10 - 2	1F	ALUMINUM	10	15.92	20.00	8.00	15.00	21.00	4.00	5.00	0.01
N0918	21 T5 / 12 - 2	1F	ALUMINUM	12	19.01	23.00	11.00	15.00	21.00	4.00	6.00	0.01
N0919	21 T5 / 14 - 2	1F	ALUMINUM	14	22.29	25.00	13.00	15.00	21.00	4.00	8.00	0.02
N0920	21 T5 / 15 - 2	1F	ALUMINUM	15	23.88	28.00	16.00	15.00	21.00	6.00	10.00	0.02
N0921	21 T5 / 16 - 2	1F	ALUMINUM	16	25.47	32.00	18.00	15.00	21.00	6.00	11.00	0.03
N0922	21 T5 / 18 - 2	1F	ALUMINUM	18	28.65	32.00	20.00	15.00	21.00	6.00	12.00	0.03
N0923	21 T5 / 19 - 2	1F	ALUMINUM	19	30.25	36.00	22.00	15.00	21.00	6.00	12.00	0.04
N0924	21 T5 / 20 - 2	1F	ALUMINUM	20	31.83	36.00	23.00	15.00	21.00	6.00	14.00	0.04
N0925	21 T5 / 22 - 2	1F	ALUMINUM	22	35.12	38.00	24.00	15.00	21.00	6.00	15.00	0.05
N0926	21 T5 / 24 - 2	1F	ALUMINUM	24	38.21	42.00	26.00	15.00	21.00	6.00	15.00	0.06
N0927	21 T5 / 25 - 2	1F	ALUMINUM	25	39.80	44.00	26.00	15.00	21.00	6.00	15.00	0.06
N0928	21 T5 / 26 - 2	1F	ALUMINUM	26	41.47	44.00	26.00	15.00	21.00	6.00	16.00	0.06
N0929	21 T5 / 27 - 2	1F	ALUMINUM	27	42.98	48.00	30.00	15.00	21.00	8.00	18.00	0.07
N0930	21 T5 / 28 - 2	1F	ALUMINUM	28	44.62	48.00	32.00	15.00	21.00	8.00	18.00	0.07
N0931	21 T5 / 30 - 2	1F	ALUMINUM	30	47.76	51.00	34.00	15.00	21.00	8.00	18.00	0.07
N0932	21 T5 / 32 - 2	1F	ALUMINUM	32	50.94	54.00	38.00	15.00	21.00	8.00	22.00	0.09
N0933	21 T5 / 36 - 2	1F	ALUMINUM	36	57.31	64.00	38.00	15.00	21.00	8.00	22.00	0.11
N0934	21 T5 / 40 - 2	1F	ALUMINUM	40	63.66	66.00	40.00	15.00	21.00	8.00	23.00	0.14
N0935	21 T5 / 42 - 2	1F	ALUMINUM	42	66.87	70.00	40.00	15.00	21.00	8.00	24.00	0.16
N0936	21 T5 / 44 - 2	1F	ALUMINUM	44	70.07	75.00	45.00	15.00	21.00	8.00	26.00	0.20
N0937	21 T5 / 48 - 2	1F	ALUMINUM	48	76.42	82.00	50.00	15.00	21.00	8.00	28.00	0.31
N0938	21 T5 / 60 - 2	1F	ALUMINUM	60	95.52	101.00	65.00	15.00	21.00	8.00	35.00	0.50

Please note all dimensions are in mm





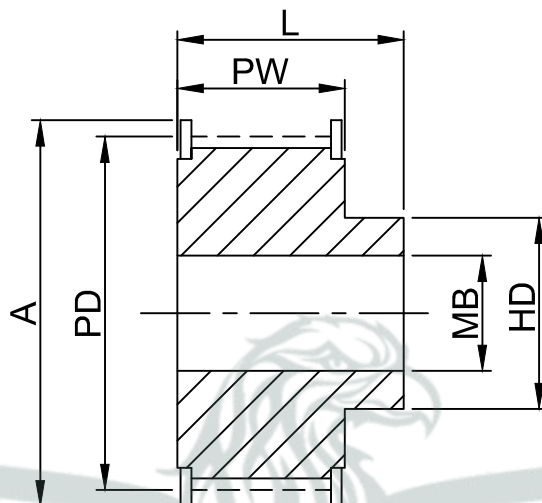
**TYPE - 1F**

**TECHNICAL SPECIFICATIONS**

**T5mm Pitch Pulleys for 16mm Width Belts. Ref. T5-16W**

PART NO.	PULLEY SIZE	PULLEY TYPE	MATERIAL	NO. OF TEETH	PD	A	HD	PW	L	MIN BORE (MB)	MAX BORE	APPROX WEIGHT (kg)
N0939	27 T5 / 10 - 2	1F	ALUMINUM	10	15.92	20.00	8.00	21.00	27.00	4.00	5.00	0.02
N0940	27 T5 / 12 - 2	1F	ALUMINUM	12	19.01	23.00	11.00	21.00	27.00	4.00	6.00	0.02
N0941	27 T5 / 14 - 2	1F	ALUMINUM	14	22.29	25.00	13.00	21.00	27.00	4.00	8.00	0.03
N0942	27 T5 / 15 - 2	1F	ALUMINUM	15	23.88	28.00	16.00	21.00	27.00	6.00	10.00	0.03
N0943	27 T5 / 16 - 2	1F	ALUMINUM	16	25.47	32.00	18.00	21.00	27.00	6.00	11.00	0.04
N0944	27 T5 / 18 - 2	1F	ALUMINUM	18	28.65	32.00	20.00	21.00	27.00	6.00	12.00	0.04
N0945	27 T5 / 19 - 2	1F	ALUMINUM	19	30.25	36.00	22.00	21.00	27.00	6.00	12.00	0.05
N0946	27 T5 / 20 - 2	1F	ALUMINUM	20	31.83	36.00	23.00	21.00	27.00	6.00	14.00	0.06
N0947	27 T5 / 22 - 2	1F	ALUMINUM	22	35.12	38.00	24.00	21.00	27.00	6.00	15.00	0.06
N0948	27 T5 / 24 - 2	1F	ALUMINUM	24	38.21	42.00	26.00	21.00	27.00	6.00	15.00	0.08
N0949	27 T5 / 25 - 2	1F	ALUMINUM	25	39.80	44.00	26.00	21.00	27.00	6.00	15.00	0.08
N0950	27 T5 / 26 - 2	1F	ALUMINUM	26	41.47	44.00	26.00	21.00	27.00	6.00	16.00	0.09
N0951	27 T5 / 27 - 2	1F	ALUMINUM	27	42.98	48.00	30.00	21.00	27.00	8.00	18.00	0.09
N0952	27 T5 / 28 - 2	1F	ALUMINUM	28	44.62	48.00	32.00	21.00	27.00	8.00	18.00	0.09
N0953	27 T5 / 30 - 2	1F	ALUMINUM	30	47.76	51.00	34.00	21.00	27.00	8.00	18.00	0.10
N0954	27 T5 / 32 - 2	1F	ALUMINIM	32	50.94	54.00	38.00	21.00	27.00	8.00	22.00	0.12
N0955	27 T5 / 36 - 2	1F	ALUMINUM	36	57.31	64.00	38.00	21.00	27.00	8.00	22.00	0.16
N0956	27 T5 / 40 - 2	1F	ALUMINUM	40	63.66	66.00	40.00	21.00	27.00	8.00	23.00	0.19
N0957	27 T5 / 42 - 2	1F	ALUMINUM	42	66.87	70.00	40.00	21.00	27.00	8.00	24.00	0.24
N0958	27 T5 / 44 - 2	1F	ALUMINUM	44	70.07	75.00	45.00	21.00	27.00	8.00	26.00	0.28
N0959	27 T5 / 48 - 2	1F	ALUMINUM	48	76.42	82.00	50.00	21.00	27.00	8.00	28.00	0.43
N0960	27 T5 / 60 - 2	1F	ALUMINUM	60	95.52	101.00	65.00	21.00	27.00	8.00	35.00	0.75

Please note all dimensions are in mm



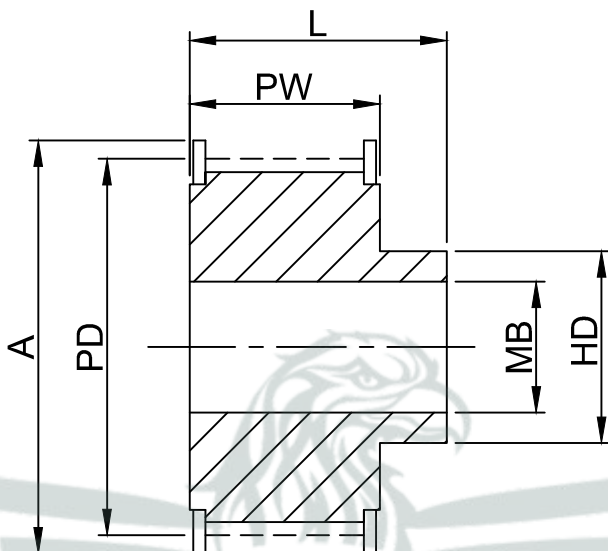
**TYPE - 1F**

**TECHNICAL SPECIFICATIONS**

**T5mm Pitch Pulleys for 25mm Width Belts. Ref. T5-25W**

PART NO.	PULLEY SIZE	PULLEY TYPE	MATERIAL	NO. OF TEETH	PD	A	HD	PW	L	MIN BORE (MB)	MAX BORE	APPROX WEIGHT (kg)
N0961	36 T5 / 10 - 2	1F	ALUMINUM	10	15.92	20.00	8.00	30.00	36.00	4.00	5.00	0.02
N0962	36 T5 / 12 - 2	1F	ALUMINUM	12	19.01	23.00	11.00	30.00	36.00	4.00	6.00	0.03
N0963	36 T5 / 14 - 2	1F	ALUMINUM	14	22.29	25.00	13.00	30.00	36.00	4.00	8.00	0.04
N0964	36 T5 / 15 - 2	1F	ALUMINUM	15	23.88	28.00	16.00	30.00	36.00	6.00	10.00	0.04
N0965	36 T5 / 16 - 2	1F	ALUMINUM	16	25.47	32.00	18.00	30.00	36.00	6.00	11.00	0.05
N0966	36 T5 / 18 - 2	1F	ALUMINUM	18	28.65	32.00	20.00	30.00	36.00	6.00	12.00	0.06
N0967	36 T5 / 19 - 2	1F	ALUMINUM	19	30.25	36.00	22.00	30.00	36.00	6.00	12.00	0.07
N0968	36 T5 / 20 - 2	1F	ALUMINUM	20	31.83	36.00	23.00	30.00	36.00	6.00	14.00	0.08
N0969	36 T5 / 22 - 2	1F	ALUMINUM	22	35.12	38.00	24.00	30.00	36.00	6.00	15.00	0.08
N0970	36 T5 / 24 - 2	1F	ALUMINUM	24	38.21	42.00	26.00	30.00	36.00	6.00	15.00	0.11
N0971	36 T5 / 25 - 2	1F	ALUMINUM	25	39.80	44.00	26.00	30.00	36.00	6.00	15.00	0.12
N0972	36 T5 / 26 - 2	1F	ALUMINUM	26	41.47	44.00	26.00	30.00	36.00	6.00	16.00	0.12
N0973	36 T5 / 27 - 2	1F	ALUMINUM	27	42.98	48.00	30.00	30.00	36.00	8.00	18.00	0.13
N0974	36 T5 / 28 - 2	1F	ALUMINUM	28	44.62	48.00	32.00	30.00	36.00	8.00	18.00	0.14
N0975	36 T5 / 30 - 2	1F	ALUMINUM	30	47.76	51.00	34.00	30.00	36.00	8.00	18.00	0.15
N0976	36 T5 / 32 - 2	1F	ALUMINUM	32	50.94	54.00	38.00	30.00	36.00	8.00	22.00	0.18
N0977	36 T5 / 36 - 2	1F	ALUMINUM	36	57.31	64.00	38.00	30.00	36.00	8.00	22.00	0.23
N0978	36 T5 / 40 - 2	1F	ALUMINUM	40	63.66	66.00	40.00	30.00	36.00	8.00	23.00	0.28
N0979	36 T5 / 42 - 2	1F	ALUMINUM	42	66.87	70.00	40.00	30.00	36.00	8.00	24.00	0.35
N0980	36 T5 / 44 - 2	1F	ALUMINUM	44	70.07	75.00	45.00	30.00	36.00	8.00	26.00	0.40
N0981	36 T5 / 48 - 2	1F	ALUMINUM	48	76.42	82.00	50.00	30.00	36.00	8.00	28.00	0.61
N0982	36 T5 / 60 - 2	1F	ALUMINUM	60	95.52	101.00	65.00	30.00	36.00	8.00	35.00	1.00

Please note all dimensions are in mm



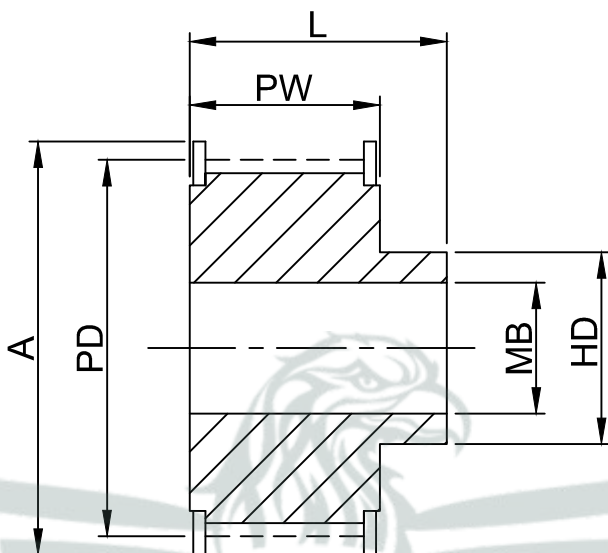
**TYPE - 1F**

**TECHNICAL SPECIFICATIONS**

**T10mm Pitch Pulleys for 16mm Width Belts. Ref. T10-16W**

PART NO.	PULLEY SIZE	PULLEY TYPE	MATERIAL	NO. OF TEETH	PD	A	HD	PW	L	MIN BORE (MB)	MAX BORE	APPROX WEIGHT (kg)
N0983	31 T10 / 12 - 2	1F	ALUMINUM	12	38.20	42.00	28.00	21.00	31.00	6.00	16.00	0.08
N0984	31 T10 / 14 - 2	1F	ALUMINUM	14	44.56	48.00	32.00	21.00	31.00	8.00	18.00	0.10
N0985	31 T10 / 15 - 2	1F	ALUMINUM	15	47.75	51.00	32.00	21.00	31.00	8.00	18.00	0.12
N0986	31 T10 / 16 - 2	1F	ALUMINUM	16	50.93	54.00	35.00	21.00	31.00	8.00	20.00	0.13
N0987	31 T10 / 18 - 2	1F	ALUMINUM	18	57.29	60.00	40.00	21.00	31.00	8.00	22.00	0.17
N0988	31 T10 / 19 - 2	1F	ALUMINUM	19	60.48	66.00	44.00	21.00	31.00	8.00	22.00	0.18
N0989	31 T10 / 20 - 2	1F	ALUMINUM	20	63.66	66.00	46.00	21.00	31.00	8.00	24.00	0.21
N0990	31 T10 / 22 - 2	1F	ALUMINUM	22	70.03	75.00	52.00	21.00	31.00	8.00	28.00	0.25
N0991	31 T10 / 24 - 2	1F	ALUMINUM	24	76.39	83.00	58.00	21.00	31.00	8.00	30.00	0.29
N0992	31 T10 / 25 - 2	1F	ALUMINUM	25	79.58	83.00	60.00	21.00	31.00	8.00	30.00	0.31
N0993	31 T10 / 26 - 2	1F	ALUMINUM	26	82.76	87.00	60.00	21.00	31.00	8.00	30.00	0.36
N0994	31 T10 / 27 - 2	1F	ALUMINUM	27	85.95	91.00	60.00	21.00	31.00	8.00	30.00	0.37
N0995	31 T10 / 28 - 2	1F	ALUMINUM	28	89.13	93.00	60.00	21.00	31.00	8.00	30.00	0.40
N0996	31 T10 / 30 - 2	1F	ALUMINUM	30	95.49	97.00	60.00	21.00	31.00	8.00	30.00	0.44
N0997	31 T10 / 32 - 2	1F	ALUMINUM	32	101.86	106.00	65.00	21.00	31.00	10.00	32.00	0.49
N0998	31 T10 / 36 - 2	1F	ALUMINUM	36	114.59	120.00	70.00	21.00	31.00	10.00	35.00	0.77
N0999	31 T10 / 40 - 2	1F	ALUMINUM	40	127.32	131.00	80.00	21.00	31.00	10.00	40.00	0.95
N1000	31 T10 / 44 - 2	1F	ALUMINUM	44	140.06	145.00	88.00	21.00	31.00	10.00	46.00	1.00
N1002	31 T10 / 48 - 2	1F	ALUMINUM	48	152.78	158.00	95.00	21.00	31.00	16.00	48.00	1.09
N1003	31 T10 / 60 - 2	1F	ALUMINUM	60	190.98	196.00	110.00	21.00	31.00	16.00	60.00	1.70

Please note all dimensions are in mm



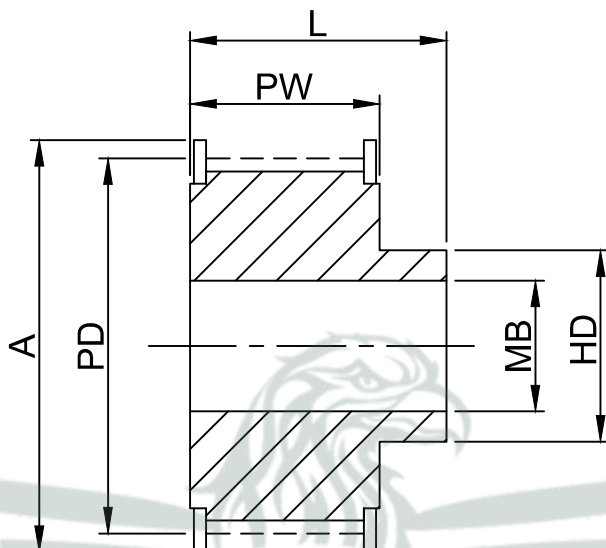
**TYPE - 1F**

**TECHNICAL SPECIFICATIONS**

**T10mm Pitch Pulleys for 25mm Width Belts. Ref. T10-25W**

PART NO.	PULLEY SIZE	PULLEY TYPE	MATERIAL	NO. OF TEETH	PD	A	HD	PW	L	MIN BORE (MB)	MAX BORE	APPROX WEIGHT (kg)
N1004	40 T10 / 12 - 2	1F	ALUMINUM	12	38.20	42.00	28.00	30.00	40.00	6.00	16.00	0.10
N1005	40 T10 / 14 - 2	1F	ALUMINUM	14	44.56	48.00	32.00	30.00	40.00	8.00	18.00	0.13
N1006	40 T10 / 15 - 2	1F	ALUMINUM	15	47.75	51.00	32.00	30.00	40.00	8.00	18.00	0.15
N1007	40 T10 / 16 - 2	1F	ALUMINUM	16	50.93	54.00	35.00	30.00	40.00	8.00	20.00	0.18
N1008	40 T10 / 18 - 2	1F	ALUMINUM	18	57.29	60.00	40.00	30.00	40.00	8.00	22.00	0.22
N1009	40 T10 / 19 - 2	1F	ALUMINUM	19	60.48	66.00	44.00	30.00	40.00	8.00	22.00	0.25
N1010	40 T10 / 20 - 2	1F	ALUMINUM	20	63.66	66.00	46.00	30.00	40.00	8.00	24.00	0.28
N1011	40 T10 / 22 - 2	1F	ALUMINUM	22	70.03	75.00	52.00	30.00	40.00	8.00	28.00	0.34
N1012	40 T10 / 24 - 2	1F	ALUMINUM	24	76.39	83.00	58.00	30.00	40.00	8.00	30.00	0.39
N1013	40 T10 / 25 - 2	1F	ALUMINUM	25	79.58	83.00	60.00	30.00	40.00	8.00	30.00	0.42
N1014	40 T10 / 26 - 2	1F	ALUMINUM	26	82.76	87.00	60.00	30.00	40.00	8.00	30.00	0.48
N1015	40 T10 / 27 - 2	1F	ALUMINUM	27	85.95	91.00	60.00	30.00	40.00	8.00	30.00	0.54
N1016	40 T10 / 28 - 2	1F	ALUMINUM	28	89.13	93.00	60.00	30.00	40.00	8.00	30.00	0.55
N1017	40 T10 / 30 - 2	1F	ALUMINUM	30	95.49	97.00	60.00	30.00	40.00	8.00	30.00	0.64
N1018	40 T10 / 32 - 2	1F	ALUMINUM	32	101.86	106.00	65.00	30.00	40.00	10.00	32.00	0.69
N1019	40 T10 / 36 - 2	1F	ALUMINUM	36	114.59	120.00	70.00	30.00	40.00	10.00	35.00	0.87
N1020	40 T10 / 40 - 2	1F	ALUMINUM	40	127.32	131.00	80.00	30.00	40.00	10.00	40.00	1.07
N1021	40 T10 / 44 - 2	1F	ALUMINUM	44	140.06	145.00	88.00	30.00	40.00	10.00	46.00	1.35
N1022	40 T10 / 48 - 2	1F	ALUMINUM	48	152.78	158.00	95.00	30.00	40.00	16.00	48.00	1.52
N1023	40 T10 / 60 - 2	1F	ALUMINUM	60	190.98	196.00	110.00	30.00	40.00	16.00	60.00	2.34

Please note all dimensions are in mm

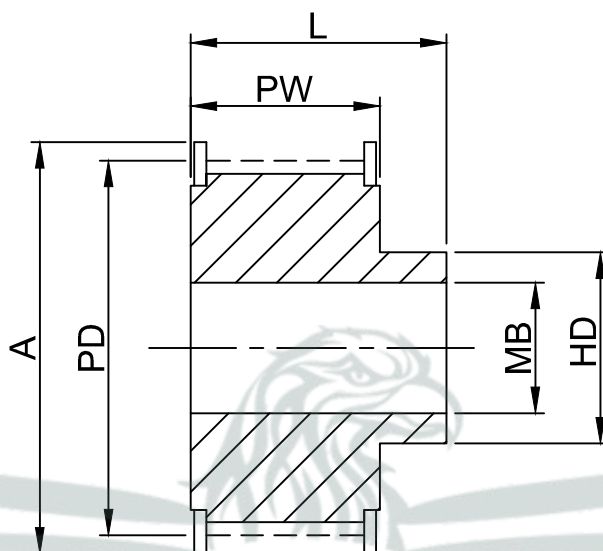

**TYPE - 1F**

## TECHNICAL SPECIFICATIONS

### T10mm Pitch Pulleys for 32mm Width Belts. Ref. T10-32W

PART NO.	PULLEY SIZE	PULLEY TYPE	MATERIAL	NO. OF TEETH	PD	A	HD	PW	L	MIN BORE (MB)	MAX BORE	APPROX WEIGHT (kg)
N1024	47 T10 / 18 - 2	1F	ALUMINUM	18	57.29	60.00	40.00	37.00	47.00	10.00	22.00	0.25
N1025	47 T10 / 19 - 2	1F	ALUMINUM	19	60.48	66.00	44.00	37.00	47.00	10.00	22.00	0.29
N1026	47 T10 / 20 - 2	1F	ALUMINUM	20	63.66	66.00	46.00	37.00	47.00	12.00	24.00	0.32
N1027	47 T10 / 22 - 2	1F	ALUMINUM	22	70.03	75.00	52.00	37.00	47.00	12.00	28.00	0.39
N1028	47 T10 / 24 - 2	1F	ALUMINUM	24	76.39	83.00	58.00	37.00	47.00	12.00	30.00	0.47
N1029	47 T10 / 25 - 2	1F	ALUMINUM	25	79.58	83.00	60.00	37.00	47.00	12.00	30.00	0.53
N1030	47 T10 / 26 - 2	1F	ALUMINUM	26	82.76	87.00	60.00	37.00	47.00	12.00	30.00	0.56
N1031	47 T10 / 27 - 2	1F	ALUMINUM	27	85.95	91.00	60.00	37.00	47.00	12.00	30.00	0.60
N1032	47 T10 / 28 - 2	1F	ALUMINUM	28	89.13	93.00	60.00	37.00	47.00	12.00	30.00	0.64
N1033	47 T10 / 30 - 2	1F	ALUMINUM	30	95.49	97.00	60.00	37.00	47.00	12.00	30.00	0.74
N1034	47 T10 / 32 - 2	1F	ALUMINUM	32	101.86	106.00	65.00	37.00	47.00	12.00	32.00	0.84
N1035	47 T10 / 36 - 2	1F	ALUMINUM	36	114.59	120.00	70.00	37.00	47.00	16.00	35.00	1.06
N1036	47 T10 / 40 - 2	1F	ALUMINUM	40	127.32	131.00	80.00	37.00	47.00	16.00	40.00	1.32
N1037	47 T10 / 44 - 2	1F	ALUMINUM	44	140.06	145.00	88.00	37.00	47.00	16.00	46.00	1.61
N1038	47 T10 / 48 - 2	1F	ALUMINUM	48	152.78	158.00	95.00	37.00	47.00	16.00	48.00	1.93
N1039	47 T10 / 60 - 2	1F	ALUMINUM	60	190.98	196.00	110.00	37.00	47.00	16.00	60.00	3.00

Please note all dimensions are in mm



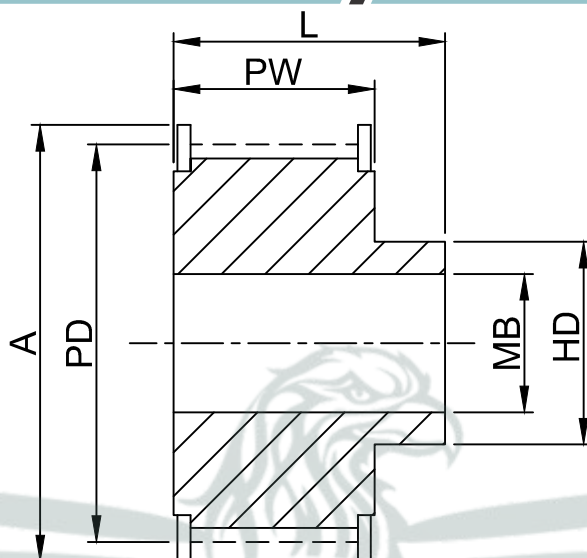
**TYPE - 1F**

**TECHNICAL SPECIFICATIONS**

**T10mm Pitch Pulleys for 50mm Width Belts. Ref. T10-50W**

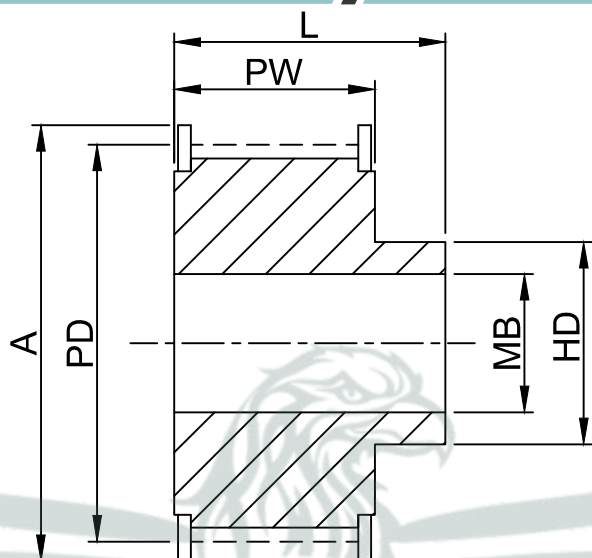
PART NO.	PULLEY SIZE	PULLEY TYPE	MATERIAL	NO. OF TEETH	PD	A	HD	PW	L	MIN BORE (MB)	MAX BORE	APPROX WEIGHT (kg)
N1040	66 T10 / 18 - 2	1F	ALUMINUM	18	57.29	60.00	40.00	56.00	66.00	10.00	22.00	0.42
N1041	66 T10 / 19 - 2	1F	ALUMINUM	19	60.48	66.00	44.00	56.00	66.00	10.00	22.00	0.47
N1042	66 T10 / 20 - 2	1F	ALUMINUM	20	63.66	66.00	46.00	56.00	66.00	12.00	24.00	0.52
N1043	66 T10 / 22 - 2	1F	ALUMINUM	22	70.03	75.00	52.00	56.00	66.00	12.00	28.00	0.57
N1044	66 T10 / 24 - 2	1F	ALUMINUM	24	76.39	83.00	58.00	56.00	66.00	12.00	30.00	0.74
N1045	66 T10 / 25 - 2	1F	ALUMINUM	25	79.58	83.00	60.00	56.00	66.00	12.00	30.00	0.77
N1046	66 T10 / 26 - 2	1F	ALUMINUM	26	82.76	87.00	60.00	56.00	66.00	12.00	30.00	0.82
N1047	66 T10 / 27 - 2	1F	ALUMINUM	27	85.95	91.00	60.00	56.00	66.00	12.00	30.00	0.95
N1048	66 T10 / 28 - 2	1F	ALUMINUM	28	89.13	93.00	60.00	56.00	66.00	12.00	30.00	0.96
N1049	66 T10 / 30 - 2	1F	ALUMINUM	30	95.49	97.00	60.00	56.00	66.00	12.00	30.00	1.17
N1050	66 T10 / 32 - 2	1F	ALUMINUM	32	101.86	106.00	65.00	56.00	66.00	12.00	32.00	1.30
N1051	66 T10 / 36 - 2	1F	ALUMINUM	36	114.59	120.00	70.00	56.00	66.00	16.00	35.00	1.64
N1052	66 T10 / 40 - 2	1F	ALUMINUM	40	127.32	131.00	80.00	56.00	66.00	16.00	40.00	2.00
N1053	66 T10 / 44 - 2	1F	ALUMINUM	44	140.06	145.00	88.00	56.00	66.00	16.00	46.00	2.36
N1054	66 T10 / 48 - 2	1F	ALUMINUM	48	152.78	158.00	95.00	56.00	66.00	16.00	48.00	2.83
N1055	66 T10 / 60 - 2	1F	ALUMINUM	60	190.98	196.00	110.00	56.00	66.00	16.00	60.00	4.37

Please note all dimensions are in mm


**TYPE - 1F**
**TECHNICAL SPECIFICATIONS**
**AT 5mm Pitch Pulleys for 10mm Width Belts. Ref. AT5-10**

PART NO.	PULLEY SIZE	PULLEY TYPE	MATERIAL	NO. OF TEETH	PD	A	HD	PW	L	MIN BORE (MB)	MAX BORE	APPROX WEIGHT (kg)
N1056	21 AT5/12-2	1F	ALUMINUM	12	19.01	23.00	11.00	15.00	21.00	4.00	6.00	0.01
N1057	21 AT5/14-2	1F	ALUMINUM	14	22.29	25.00	14.00	15.00	21.00	4.00	8.00	0.02
N1058	21 AT5/15-2	1F	ALUMINUM	15	23.88	28.00	16.00	15.00	21.00	6.00	10.00	0.02
N1059	21 AT5/16-2	1F	ALUMINUM	16	25.47	32.00	18.00	15.00	21.00	6.00	11.00	0.03
N1060	21 AT5/18-2	1F	ALUMINUM	18	28.65	32.00	20.00	15.00	21.00	6.00	12.00	0.03
N1061	21 AT5/19-2	1F	ALUMINUM	19	30.25	36.00	22.00	15.00	21.00	6.00	12.00	0.04
N1062	21 AT5/20-2	1F	ALUMINUM	20	31.83	36.00	23.00	15.00	21.00	6.00	14.00	0.04
N1063	21 AT5/22-2	1F	ALUMINUM	22	35.12	38.00	24.00	15.00	21.00	6.00	15.00	0.05
N1064	21 AT5/24-2	1F	ALUMINUM	24	38.12	42.00	26.00	15.00	21.00	6.00	15.00	0.06
N1065	21 AT5/25-2	1F	ALUMINUM	25	39.80	44.00	26.00	15.00	21.00	6.00	15.00	0.06
N1066	21 AT5/26-2	1F	ALUMINUM	26	41.47	44.00	26.00	15.00	21.00	6.00	16.00	0.06
N1067	21 AT5/27-2	1F	ALUMINUM	27	42.98	48.00	30.00	15.00	21.00	8.00	18.00	0.06
N1068	21 AT5/28-2	1F	ALUMINUM	28	44.62	48.00	32.00	15.00	21.00	8.00	18.00	0.07
N1069	21 AT5/30-2	1F	ALUMINUM	30	47.76	51.00	34.00	15.00	21.00	8.00	18.00	0.07
N1070	21 AT5/32-2	1F	ALUMINUM	32	50.94	54.00	36.00	15.00	21.00	8.00	22.00	0.09
N1071	21 AT5/36-2	1F	ALUMINUM	36	57.31	64.00	38.00	15.00	21.00	8.00	22.00	0.11
N1072	21 AT5/40-2	1F	ALUMINUM	40	63.66	66.00	40.00	15.00	21.00	8.00	23.00	0.14
N1073	21 AT5/42-2	1F	ALUMINUM	42	66.87	70.00	40.00	15.00	21.00	8.00	24.00	0.18
N1074	21 AT5/44-2	1F	ALUMINUM	44	70.07	75.00	45.00	15.00	21.00	8.00	26.00	0.18
N1075	21 AT5/48-2	1F	ALUMINUM	48	76.42	82.00	50.00	15.00	21.00	8.00	28.00	0.20
N1076	21 AT5/60-2	1F	ALUMINUM	60	95.52	101.00	65.00	15.00	21.00	8.00	35.00	0.31

Please note all dimensions are in mm



**TYPE - 1F**

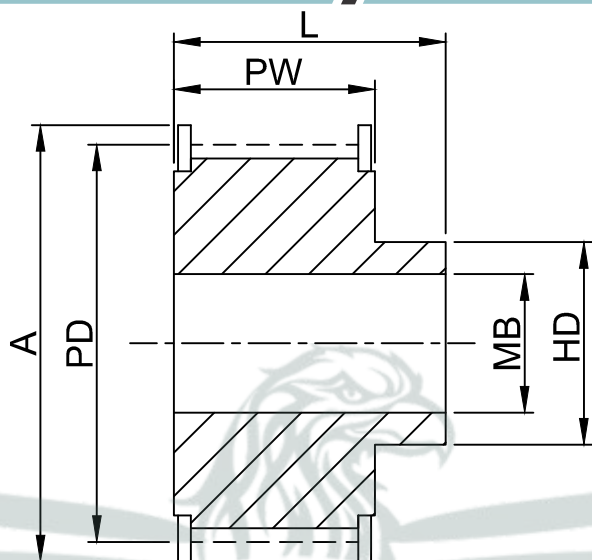
**TECHNICAL SPECIFICATIONS**

**AT 5mm Pitch Pulleys for 16mm Width Belts. Ref. AT5-16**

PART NO.	PULLEY SIZE	PULLEY TYPE	MATERIAL	NO. OF TEETH	PD	A	HD	PW	L	MIN BORE (MB)	MAX BORE	APPROX WEIGHT (kg)
N1077	27 AT5/12-2	1F	ALUMINUM	12	19.01	23.00	11.00	21.00	27.00	4.00	6.00	0.02
N1078	27 AT5/14-2	1F	ALUMINUM	14	22.29	25.00	14.00	21.00	27.00	4.00	8.00	0.03
N1079	27 AT5/15-2	1F	ALUMINUM	15	23.88	28.00	16.00	21.00	27.00	6.00	10.00	0.03
N1080	27 AT5/16-2	1F	ALUMINUM	16	25.47	32.00	18.00	21.00	27.00	6.00	11.00	0.04
N1081	27 AT5/18-2	1F	ALUMINUM	18	28.65	32.00	20.00	21.00	27.00	6.00	12.00	0.04
N1082	27 AT5/19-2	1F	ALUMINUM	19	30.25	36.00	22.00	21.00	27.00	6.00	12.00	0.05
N1083	27 AT5/20-2	1F	ALUMINUM	20	31.83	36.00	23.00	21.00	27.00	6.00	14.00	0.06
N1084	27 AT5/22-2	1F	ALUMINUM	22	35.12	38.00	24.00	21.00	27.00	6.00	15.00	0.06
N1085	27 AT5/24-2	1F	ALUMINUM	24	38.21	42.00	26.00	21.00	27.00	6.00	15.00	0.08
N1086	27 AT5/25-2	1F	ALUMINUM	25	39.80	44.00	26.00	21.00	27.00	6.00	15.00	0.08
N1087	27 AT5/26-2	1F	ALUMINUM	26	41.47	44.00	26.00	21.00	27.00	6.00	16.00	0.09
N1088	27 AT5/27-2	1F	ALUMINUM	27	42.98	48.00	30.00	21.00	27.00	8.00	18.00	0.09
N1089	27 AT5/28-2	1F	ALUMINUM	28	44.62	48.00	32.00	21.00	27.00	8.00	18.00	0.09
N1090	27 AT5/30-2	1F	ALUMINUM	30	47.76	51.00	34.00	21.00	27.00	8.00	18.00	0.10
N1091	27 AT5/32-2	1F	ALUMINUM	32	50.94	54.00	36.00	21.00	27.00	8.00	22.00	0.12
N1092	27 AT5/36-2	1F	ALUMINUM	36	57.31	64.00	38.00	21.00	27.00	8.00	22.00	0.16
N1093	27 AT5/40-2	1F	ALUMINUM	40	63.66	66.00	40.00	21.00	27.00	8.00	23.00	0.19
N1094	27 AT5/42-2	1F	ALUMINUM	42	66.87	70.00	40.00	21.00	27.00	8.00	24.00	0.20
N1095	27 AT5/44-2	1F	ALUMINUM	44	70.07	75.00	45.00	21.00	27.00	8.00	26.00	0.23
N1096	27 AT5/48-2	1F	ALUMINUM	48	76.42	82.00	50.00	21.00	27.00	8.00	28.00	0.28
N1097	27 AT5/60-2	1F	ALUMINUM	60	95.52	101.00	65.00	21.00	27.00	8.00	35.00	0.43

Please note all dimensions are in mm





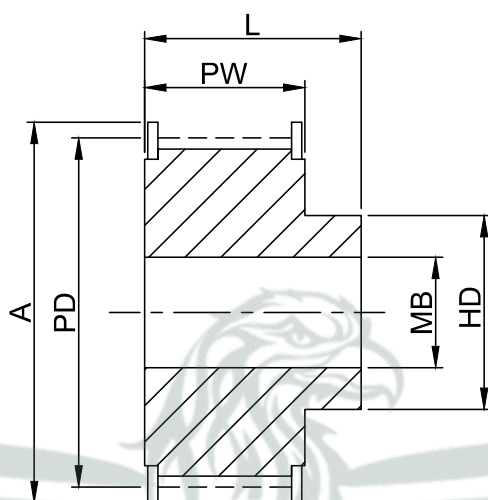
**TYPE - 1F**

**TECHNICAL SPECIFICATIONS**

**AT 5mm Pitch Pulleys for 25mm Width Belts. Ref. AT5-25**

PART NO.	PULLEY SIZE	PULLEY TYPE	MATERIAL	NO. OF TEETH	PD	A	HD	PW	L	MIN BORE (MB)	MAX BORE	APPROX WEIGHT (kg)
N1098	36 AT5/12-2	1F	ALUMINUM	12	19.01	23.00	11.00	30.00	36.00	4.00	6.00	0.03
N1099	36 AT5/14-2	1F	ALUMINUM	14	22.29	25.00	14.00	30.00	36.00	4.00	8.00	0.04
N1100	36 AT5/15-2	1F	ALUMINUM	15	23.88	28.00	16.00	30.00	36.00	6.00	10.00	0.04
N1101	36 AT5/16-2	1F	ALUMINUM	16	25.47	32.00	18.00	30.00	36.00	6.00	11.00	0.05
N1102	36 AT5/18-2	1F	ALUMINUM	18	28.65	32.00	20.00	30.00	36.00	6.00	12.00	0.06
N1103	36 AT5/19-2	1F	ALUMINUM	19	30.25	36.00	22.00	30.00	36.00	6.00	12.00	0.07
N1104	36 AT5/20-2	1F	ALUMINUM	20	31.83	36.00	23.00	30.00	36.00	6.00	14.00	0.08
N1105	36 AT5/22-2	1F	ALUMINUM	22	35.12	38.00	24.00	30.00	36.00	6.00	15.00	0.08
N1106	36 AT5/24-2	1F	ALUMINUM	24	38.21	42.00	26.00	30.00	36.00	6.00	15.00	0.11
N1107	36 AT5/25-2	1F	ALUMINUM	25	39.80	44.00	26.00	30.00	36.00	6.00	15.00	0.12
N1108	36 AT5/26-2	1F	ALUMINUM	26	41.47	44.00	26.00	30.00	36.00	6.00	16.00	0.12
N1109	36 AT5/27-2	1F	ALUMINUM	27	42.98	48.00	30.00	30.00	36.00	8.00	18.00	0.13
N1110	36 AT5/28-2	1F	ALUMINUM	28	44.62	48.00	32.00	30.00	36.00	8.00	18.00	0.14
N1111	36 AT5/30-2	1F	ALUMINUM	30	47.76	51.00	34.00	30.00	36.00	8.00	18.00	0.15
N1112	36 AT5/32-2	1F	ALUMINUM	32	50.94	54.00	36.00	30.00	36.00	8.00	22.00	0.18
N1113	36 AT5/36-2	1F	ALUMINUM	36	57.31	64.00	38.00	30.00	36.00	8.00	22.00	0.23
N1114	36 AT5/40-2	1F	ALUMINUM	40	63.66	66.00	40.00	30.00	36.00	8.00	23.00	0.28
N1115	36 AT5/42-2	1F	ALUMINUM	42	66.87	70.00	40.00	30.00	36.00	8.00	24.00	0.29
N1116	36 AT5/44-2	1F	ALUMINUM	44	70.07	75.00	45.00	30.00	36.00	8.00	26.00	0.31
N1117	36 AT5/48-2	1F	ALUMINUM	48	76.42	82.00	50.00	30.00	36.00	8.00	28.00	0.40
N1118	36 AT5/60-2	1F	ALUMINUM	60	95.52	101.00	65.00	30.00	36.00	8.00	35.00	0.61

Please note all dimensions are in mm



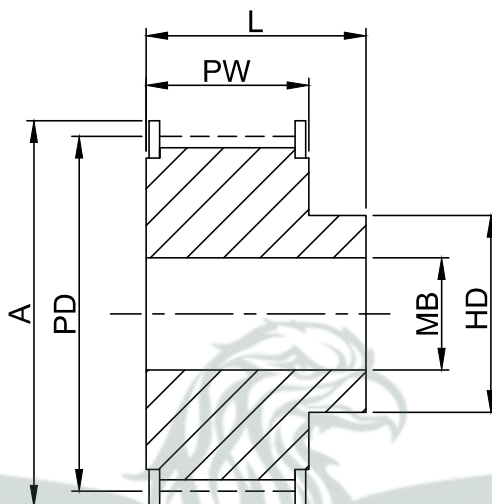
**TYPE - 1F**

**TECHNICAL SPECIFICATIONS**

**AT 10mm Pitch Pulleys for 16mm Width Belts. Ref. AT10-16**

PART NO.	PULLEY SIZE	PULLEY TYPE	MATERIAL	NO. OF TEETH	PD	A	HD	PW	L	MIN BORE (MB)	MAX BORE (MB)	APPROX WEIGHT (kg)
N1119	31 AT10/15-2	1F	ALUMINUM	15	47.75	51.00	32.00	21.00	31.00	8.00	18.00	0.12
N1120	31 AT10/16-2	1F	ALUMINUM	16	50.93	54.00	35.00	21.00	31.00	8.00	20.00	0.13
N1121	31 AT10/18-2	1F	ALUMINUM	18	57.29	60.00	40.00	21.00	31.00	8.00	22.00	0.17
N1122	31 AT10/19-2	1F	ALUMINUM	19	60.48	66.00	44.00	21.00	31.00	8.00	22.00	0.18
N1123	31 AT10/20-2	1F	ALUMINUM	20	63.66	66.00	46.00	21.00	31.00	8.00	24.00	0.21
N1124	31 AT10/22-2	1F	ALUMINUM	22	70.03	75.00	52.00	21.00	31.00	8.00	28.00	0.25
N1125	31 AT10/24-2	1F	ALUMINUM	24	76.39	83.00	58.00	21.00	31.00	8.00	30.00	0.29
N1126	31 AT10/25-2	1F	ALUMINUM	25	79.58	83.00	60.00	21.00	31.00	8.00	30.00	0.31
N1127	31 AT10/26-2	1F	ALUMINUM	26	82.76	87.00	60.00	21.00	31.00	8.00	30.00	0.36
N1128	31 AT10/27-2	1F	ALUMINUM	27	85.95	91.00	60.00	21.00	31.00	8.00	30.00	0.37
N1129	31 AT10/28-2	1F	ALUMINUM	28	89.13	93.00	60.00	21.00	31.00	8.00	30.00	0.40
N1130	31 AT10/30-2	1F	ALUMINUM	30	95.49	97.00	60.00	21.00	31.00	8.00	30.00	0.44
N1131	31 AT10/32-2	1F	ALUMINUM	32	101.86	106.00	65.00	21.00	31.00	10.00	32.00	0.49
N1132	31 AT10/36-2	1F	ALUMINUM	36	114.59	120.00	70.00	21.00	31.00	10.00	35.00	0.77
N1133	31 AT10/40-2	1F	ALUMINUM	40	127.32	135.00	80.00	21.00	31.00	10.00	40.00	0.95
N1134	31 AT10/44-2	1F	ALUMINUM	44	140.06	145.00	88.00	21.00	31.00	10.00	46.00	1.00
N1135	31 AT10/48-2	1F	ALUMINUM	48	152.78	158.00	95.00	21.00	31.00	16.00	48.00	1.10
N1136	31 AT10/60-2	1F	ALUMINUM	60	190.98	196.00	110.00	21.00	31.00	16.00	60.00	1.70

Please note all dimensions are in mm



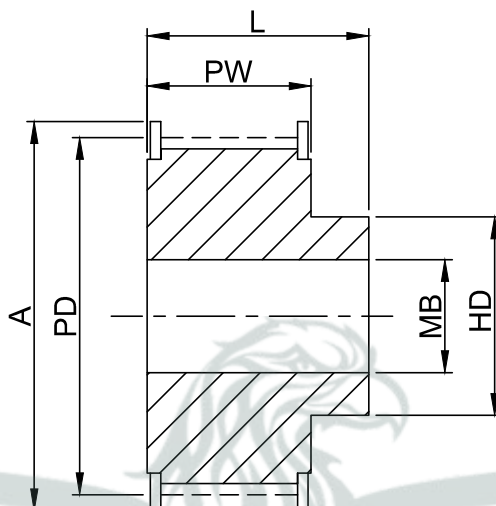
**TYPE - 1F**

**TECHNICAL SPECIFICATIONS**

**AT 10mm Pitch Pulleys for 25mm Width Belts. Ref. AT10-25**

PART NO.	PULLEY SIZE	PULLEY TYPE	MATERIAL	NO. OF TEETH	PD	A	HD	PW	L	MIN BORE (MB)	MAX BORE (MB)	APPROX WEIGHT (kg)
N1137	40 AT10/15-2	1F	ALUMINUM	15	47.75	51.00	32.00	30.00	40.00	8.00	18.00	0.15
N1138	40 AT10/16-2	1F	ALUMINUM	16	50.93	54.00	35.00	30.00	40.00	8.00	20.00	0.18
N1139	40 AT10/18-2	1F	ALUMINUM	18	57.29	60.00	40.00	30.00	40.00	8.00	22.00	0.22
N1140	40 AT10/19-2	1F	ALUMINUM	19	60.48	66.00	44.00	30.00	40.00	8.00	22.00	0.25
N1141	40 AT10/20-2	1F	ALUMINUM	20	63.66	66.00	46.00	30.00	40.00	8.00	24.00	0.28
N1142	40 AT10/22-2	1F	ALUMINUM	22	70.03	75.00	52.00	30.00	40.00	8.00	28.00	0.34
N1143	40 AT10/24-2	1F	ALUMINUM	24	76.39	83.00	58.00	30.00	40.00	8.00	30.00	0.39
N1144	40 AT10/25-2	1F	ALUMINUM	25	79.58	83.00	60.00	30.00	40.00	8.00	30.00	0.42
N1145	40 AT10/26-2	1F	ALUMINUM	26	82.76	87.00	60.00	30.00	40.00	8.00	30.00	0.48
N1146	40 AT10/27-2	1F	ALUMINUM	27	85.95	91.00	60.00	30.00	40.00	8.00	30.00	0.54
N1147	40 AT10/28-2	1F	ALUMINUM	28	89.13	93.00	60.00	30.00	40.00	8.00	30.00	0.55
N1148	40 AT10/30-2	1F	ALUMINUM	30	95.49	97.00	60.00	30.00	40.00	8.00	30.00	0.64
N1149	40 AT10/32-2	1F	ALUMINUM	32	101.86	106.00	65.00	30.00	40.00	10.00	32.00	0.69
N1150	40 AT10/36-2	1F	ALUMINUM	36	114.59	120.00	70.00	30.00	40.00	10.00	35.00	0.87
N1151	40 AT10/40-2	1F	ALUMINUM	40	127.32	135.00	80.00	30.00	40.00	10.00	40.00	1.07
N1152	40 AT10/44-2	1F	ALUMINUM	44	140.06	145.00	88.00	30.00	40.00	10.00	46.00	1.35
N1153	40 AT10/48-2	1F	ALUMINUM	48	152.78	158.00	95.00	30.00	40.00	16.00	48.00	1.52
N1154	40 AT10/60-2	1F	ALUMINUM	60	190.98	169.00	110.00	30.00	40.00	16.00	60.00	2.34

Please note all dimensions are in mm



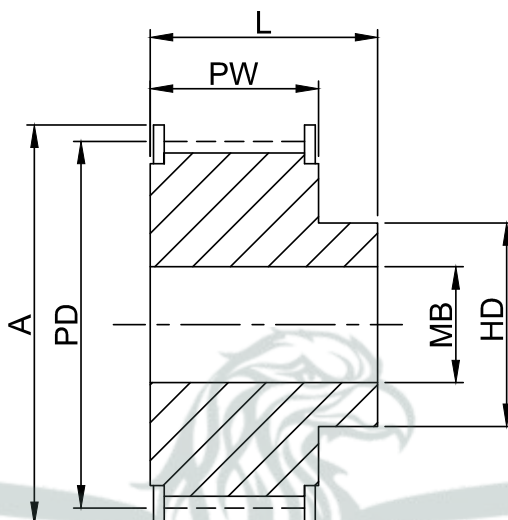
**TYPE - 1F**

**TECHNICAL SPECIFICATIONS**

**AT 10mm Pitch Pulleys for 32mm Width Belts. Ref. AT10-32**

PART NO.	PULLEY SIZE	PULLEY TYPE	MATERIAL	NO. OF TEETH	PD	A	HD	PW	L	MIN BORE (MB)	MAX BORE (MB)	APPROX WEIGHT (kg)
N1155	47 AT10/18-2	1F	ALUMINUM	18	57.29	60.00	40.00	37.00	47.00	10.00	22.00	0.25
N1156	47 AT10/19-2	1F	ALUMINUM	19	60.48	66.00	44.00	37.00	47.00	10.00	22.00	0.29
N1157	47 AT10/20-2	1F	ALUMINUM	20	63.66	66.00	46.00	37.00	47.00	12.00	24.00	0.32
N1158	47 AT10/22-2	1F	ALUMINUM	22	70.03	75.00	52.00	37.00	47.00	12.00	28.00	0.39
N1159	47 AT10/24-2	1F	ALUMINUM	24	76.39	83.00	58.00	37.00	47.00	12.00	30.00	0.47
N1160	47 AT10/25-2	1F	ALUMINUM	25	79.58	83.00	60.00	37.00	47.00	12.00	30.00	0.53
N1161	47 AT10/26-2	1F	ALUMINUM	26	82.76	87.00	60.00	37.00	47.00	12.00	30.00	0.56
N1162	47 AT10/27-2	1F	ALUMINUM	27	85.95	91.00	60.00	37.00	47.00	12.00	30.00	0.60
N1163	47 AT10/28-2	1F	ALUMINUM	28	89.13	93.00	60.00	37.00	47.00	12.00	30.00	0.64
N1164	47 AT10/30-2	1F	ALUMINUM	30	95.49	97.00	60.00	37.00	47.00	12.00	30.00	0.74
N1165	47 AT10/32-2	1F	ALUMINUM	32	101.86	106.00	65.00	37.00	47.00	12.00	32.00	0.84
N1166	47 AT10/36-2	1F	ALUMINUM	36	114.59	120.00	70.00	37.00	47.00	16.00	35.00	1.06
N1167	47 AT10/40-2	1F	ALUMINUM	40	127.32	135.00	80.00	37.00	47.00	16.00	40.00	1.32
N1168	47 AT10/44-2	1F	ALUMINUM	44	140.06	145.00	88.00	37.00	47.00	16.00	46.00	1.61
N1169	47 AT10/48-2	1F	ALUMINUM	48	152.78	158.00	95.00	37.00	47.00	16.00	48.00	1.93
N1170	47 AT10/60-2	1F	ALUMINUM	60	190.98	196.00	110.00	37.00	47.00	16.00	60.00	3.00

Please note all dimensions are in mm


**TYPE - 1F**

## TECHNICAL SPECIFICATIONS

### AT 10mm Pitch Pulleys for 50mm Width Belts. Ref. AT10-50

PART NO.	PULLEY SIZE	PULLEY TYPE	MATERIAL	NO. OF TEETH	PD	A	HD	PW	L	MIN BORE (MB)	MAX BORE (MB)	APPROX WEIGHT (kg)
N1171	66 AT10/18-2	1F	ALUMINUM	18	57.29	60.00	40.00	56.00	66.00	10.00	22.00	0.42
N1172	66 AT10/19-2	1F	ALUMINUM	19	60.48	66.00	44.00	56.00	66.00	10.0	22.00	0.47
N1173	66 AT10/20-2	1F	ALUMINUM	20	63.66	66.00	46.00	56.00	66.00	12.00	24.00	0.52
N1174	66 AT10/22-2	1F	ALUMINUM	22	70.03	75.00	52.00	56.00	66.00	12.00	28.00	0.57
N1175	66 AT10/24-2	1F	ALUMINUM	24	76.39	83.00	58.00	56.00	66.00	12.00	30.00	0.74
N1176	66 AT10/25-2	1F	ALUMINUM	25	79.58	83.00	60.00	56.00	66.00	12.00	30.00	0.77
N1177	66 AT10/26-2	1F	ALUMINUM	26	82.76	87.00	60.00	56.00	66.00	12.00	30.00	0.82
N1178	66 AT10/27-2	1F	ALUMINUM	27	85.95	91.00	60.00	56.00	66.00	12.00	30.00	0.95
N1179	66 AT10/28-2	1F	ALUMINUM	28	89.13	93.00	60.00	56.00	66.00	12.00	30.00	0.96
N1180	66 AT10/30-2	1F	ALUMINUM	30	95.49	97.00	60.00	56.00	66.00	12.00	30.00	1.17
N1181	66 AT10/32-2	1F	ALUMINUM	32	101.86	106.00	65.00	56.00	66.00	12.00	32.00	1.30
N1182	66 AT10/36-2	1F	ALUMINUM	36	114.59	120.00	70.00	56.00	66.00	16.00	35.00	1.64
N1183	66 AT10/40-2	1F	ALUMINUM	40	127.32	135.00	80.00	56.00	66.00	16.00	40.00	2.00
N1184	66 AT10/44-2	1F	ALUMINUM	44	140.06	145.00	88.00	56.00	66.00	16.00	46.00	2.36
N1185	66 AT10/48-2	1F	ALUMINUM	48	152.78	158.00	95.00	56.00	66.00	16.00	48.00	2.83
N1186	66 AT10/60-2	1F	ALUMINUM	60	190.98	196.00	110.00	56.00	66.00	16.00	60.00	4.37

Please note all dimensions are in mm



## **AVM TIMING PULLEY PVT. LTD.**

*(formerly known as Ultrahigh (india) Engineers)*

📍 59, Vishala Estate (East), Nr. Madhuram Estate,  
Kathwada Ring Road, Odhav, Ahmedabad - 382415. (Gujarat), India

📞 Mr.Amit Patel +91 9327595211

📞 +91 93275 95211 | +91 98980 98434

✉️ amitptp@gmail.com | info@timingpulleyindia.com

🌐 [www.avmtimingpulley.com](http://www.avmtimingpulley.com)